

# Anti-Phospho-MCM2 (Ser41) Rabbit antibody



Catalog Number: 168774

## Product name

Anti-Phospho-MCM2 (Ser41) Rabbit antibody

## Specificity

Human, Mouse, Rat

## Antibody description

Phospho-MCM2 (Ser41) Rabbit monoclonal antibody

## Preparation

Antigen: A synthetic phosphopeptide corresponding to residues surrounding Ser41 of human MCM2

## Formulation

Supplied in 50nM Tris-Glycine(pH 7.4), 0.15M NaCl, 40%Glycerol, 0.01% sodium azide and 0.05% BSA.

## Storage

Store at 4°C short term. Aliquot and store at -20°C long term. Avoid freeze / thaw cycle.

## Clonality

Monoclonal

## Ig Type

Rabbit IgG

## Applications

WB, IHC-P, IP

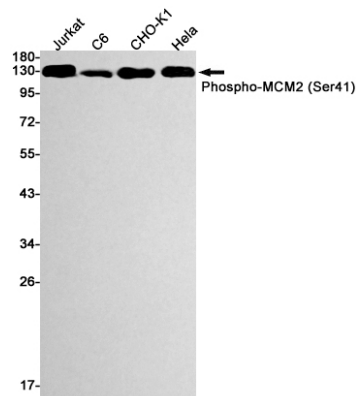
## Dilutions

1:5000

1:50

1:20

## Validations



Western blot detection of Phospho-MCM2 (Ser41) in Jurkat, C6, CHO-K1, HeLa cell lysates using Phospho-MCM2 (Ser41) Rabbit mAb(1:1000 diluted). Predicted band size:102kDa. Observed band size:125kDa.