

# Anti-PIM1 Rabbit antibody



Catalog Number: 167774

## Product name

Anti-PIM1 Rabbit antibody

## Specificity

Human, Mouse

## Antibody description

PIM1 Rabbit monoclonal antibody

## Preparation

Antigen: A synthetic peptide of human PIM1

## Formulation

50nM Tris-Glycine(pH 7.4), 0.15M NaCl,  
40%Glycerol, 0.01% sodium azide and 0.05% BSA

## Storage

Store at 4°C short term. Store at -20°C long term.  
Avoid freeze / thaw cycle.

## Clonality

Monoclonal

## Ig Type

Rabbit IgG

## Applications

WB, IHC-P, ICC/IF, FC

## Dilutions

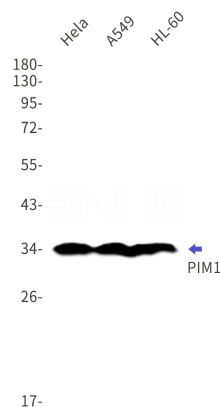
WB: 1/2000-1/10000

IHC: 1/20-1/50

ICC/IF: 1/20-1/100

FC: 1/20

## Validations



Western blot detection of PIM1 in HeLa, A549, HL-60 cell lysates using PIM1 Rabbit mAb(1:1000 diluted). Predicted band size: 45kDa. Observed band size: 34kDa.