

Anti-Phospho-STAT3(Ser727) Rabbit antibody



Catalog Number: 166774

Product name

Anti-Phospho-STAT3(Ser727) Rabbit antibody

Specificity

Human, Mouse, Rat

Antibody description

Phospho-STAT3(Ser727) Rabbit polyclonal antibody

Preparation

Antigen: Peptide sequence around phosphorylation site of serine 727 (P-M-S(p)-P-R) derived from Human STAT3.

Formulation

Supplied at 1.0mg/mL in phosphate buffered saline (without Mg²⁺ and Ca²⁺), pH 7.4, 150mM NaCl, 0.02% sodium azide and 50% glycerol.

Storage

Store at 4°C short term. Store at -20°C long term. Avoid freeze / thaw cycle.

Clonality

Polyclonal

Ig Type

Rabbit IgG

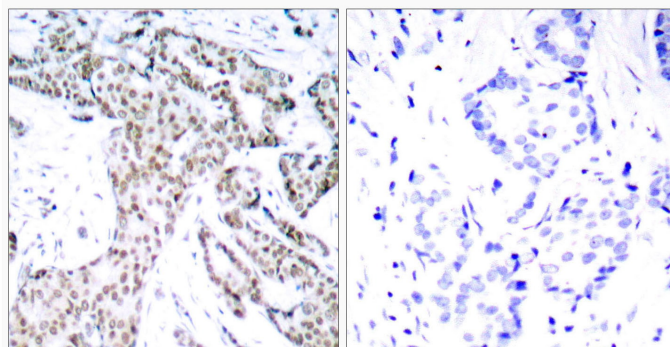
Applications

WB, IHC-P, ICC/IF

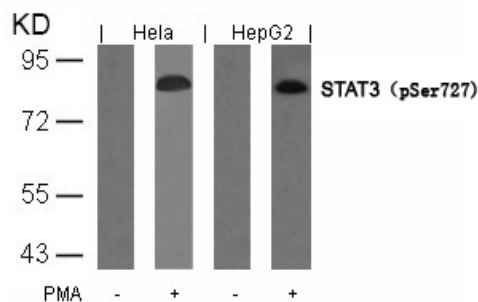
Dilutions

WB:1/500-1/1000 ICC:1/100-1/200 IHC:1/50-1/100

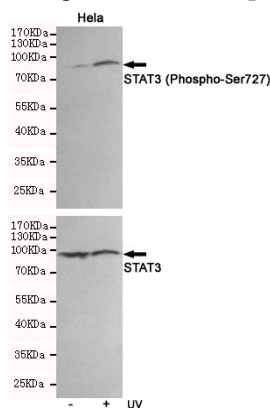
Validations



Immunohistochemical analysis of paraffin-embedded human breast carcinoma tissue using STAT3 (Phospho-Ser727) Antibody (left) or the same antibody preincubated with blocking peptide (right).



Western blot analysis of extracts from HeLa and HepG2 cells untreated or treated with PMA using STAT3 (Phospho-Ser727) Antibody .

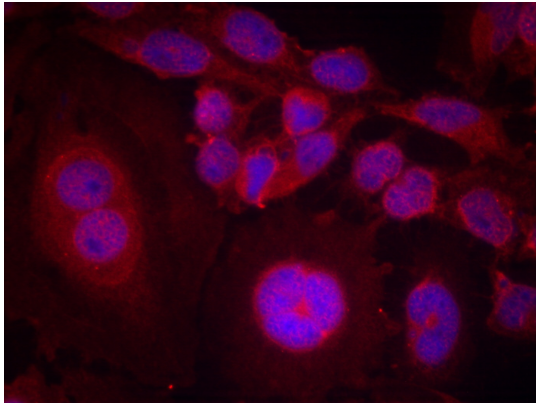


Western blot analysis of extracts from HeLa cells, untreated or treated with UV, using STAT3 (Phospho-Ser727) Rabbit pAb (310091, 1:500 diluted, upper) or p38 MAPK Rabbit pAb (310008, 1:500 diluted, lower).

Anti-Phospho-STAT3(Ser727) Rabbit antibody



Catalog Number: 166774



Immunofluorescence staining of methanol-fixed Hela cells using STAT3 (Phospho-Ser727) Antibody .