

RNF166 Polyclonal Antibody



Catalog Number: 165774

Product name

RNF166 Polyclonal Antibody

Specificity

Human, Mouse, Rat

Antibody description

Polyclonal antibody to RNF166

Preparation

Antigen: A synthetic peptide corresponding to a sequence within amino acids 100 to the C-terminus of human RNF166 (NP_849163.1).

Formulation

PBS with 0.02% sodium azide, 50% glycerol, pH7.3.

Storage

Store at -20°C. Avoid freeze / thaw cycles.

Clonality

Polyclonal

Ig Type

Rabbit IgG

Applications

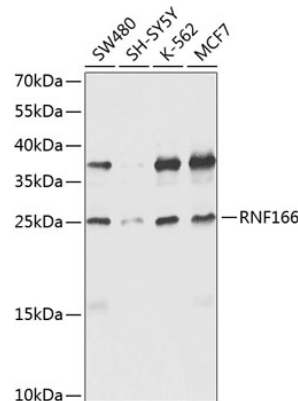
WB, IHC

Dilutions

WB 1:500 - 1:2000

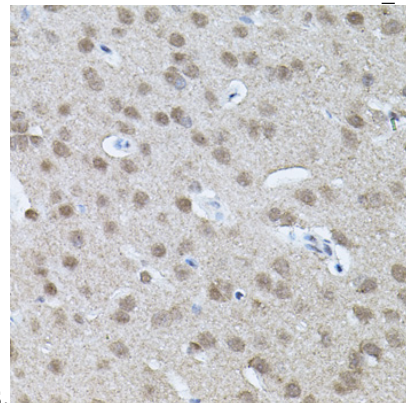
IHC 1:50 - 1:200

Validations



Western blot - RNF166 Polyclonal Antibody

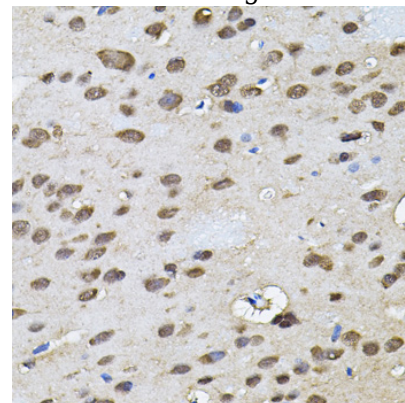
Western blot analysis of extracts of various cell lines, using RNF166 antibody at 1:1000 dilution. Secondary antibody: HRP Goat Anti-Rabbit IgG (H+L) at 1:10000 dilution. Lysates/proteins: 25ug per lane. Blocking buffer: 3% nonfat dry milk in TBST. Detection: ECL Enhanced Kit. Exposure



time: 15s.

Immunohistochemistry - RNF166 Polyclonal Antibody

Immunohistochemistry of paraffin-embedded mouse brain using RNF166 antibody (40x lens).



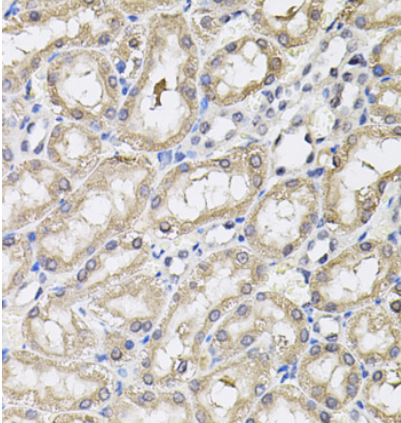
RNF166 Polyclonal Antibody



Catalog Number: 165774

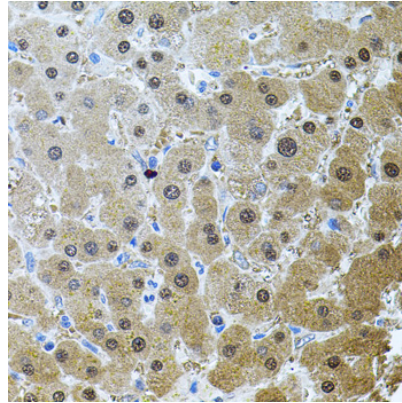
Immunohistochemistry - RNF166 Polyclonal Antibody

Immunohistochemistry of paraffin-embedded rat brain using RNF166 antibody (40x lens).



Immunohistochemistry - RNF166 Polyclonal Antibody

Immunohistochemistry of paraffin-embedded rat kidney using RNF166 antibody (40x lens).



Immunohistochemistry - RNF166 Polyclonal Antibody

Immunohistochemistry of paraffin-embedded human liver injury using RNF166 antibody (40x lens).