

# Anti-SC35 Rabbit antibody



Catalog Number: 167374

## Product name

Anti-SC35 Rabbit antibody

## Specificity

Human

## Antibody description

SC35 Rabbit polyclonal antibody

## Preparation

Antigen: A synthetic peptide of human SC35

## Formulation

Supplied in 50nM Tris-Glycine(pH 7.4), 0.15M NaCl, 40%Glycerol, 0.01% sodium azide and 0.05% BSA.

## Storage

Store at -20°C. Stable for 12 months from date of receipt.

## Clonality

Polyclonal

## Ig Type

Rabbit IgG

## Applications

WB, IHC-P, FC, IP

## Dilutions

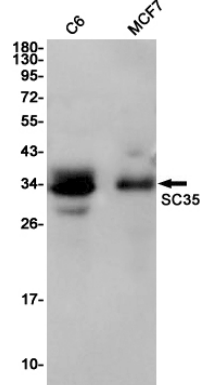
WB: 1/1000

IHC: 1/200

FC: 1/50

IP: 1/20

## Validations



Western blot detection of SC35 in C6,MCF7 cell lysates using SC35 Rabbit pAb(1:1000 diluted).Predicted band size:26KDa.Observed band size:35KDa.