

SLC38A3 antibody



Catalog Number: 115374

Product name

SLC38A3 antibody

Recommended Dilution:

WB: 1:500-1:5000

Specificity

Human, Mouse, Rat; other species not tested.

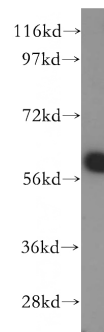
IP: 1:500-1:5000

IHC: 1:20-1:200

Antibody description

SLC38A3 Rabbit Polyclonal antibody. Positive IHC detected in human lung cancer tissue. Positive FC detected in HeLa cells. Positive WB detected in HeLa cells, BGC-823 cells, HEK-293 cells, human heart tissue, mouse brain tissue, mouse liver tissue, mouse pancreas tissue, Raji cells. Positive IP detected in mouse heart tissue. Observed molecular weight by Western-blot: 65-70kd

Validations



Preparation

This antibody was obtained by immunization of SLC38A3 recombinant protein (Accession Number: XM_006712954). Purification method: Antigen affinity purified.

HeLa cells were subjected to SDS PAGE followed by western blot with Catalog No:115374(SLC38A3 antibody) at dilution of 1:400

Formulation

PBS with 0.02% sodium azide and 50% glycerol pH 7.3.

Storage

Store at -20°C. DO NOT ALIQUOT

Clonality

Polyclonal

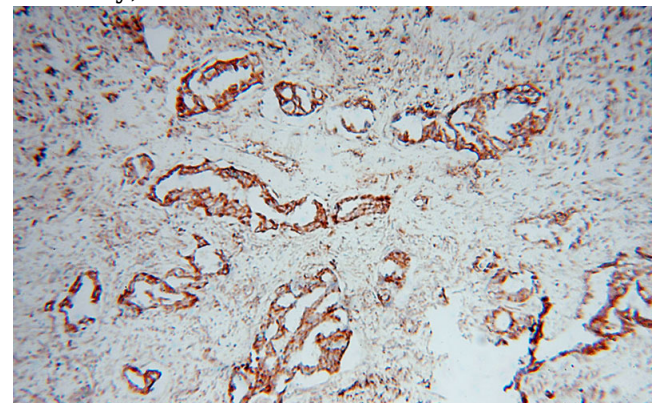
Ig Type

Rabbit IgG

Applications

ELISA, WB, IHC, FC, IP

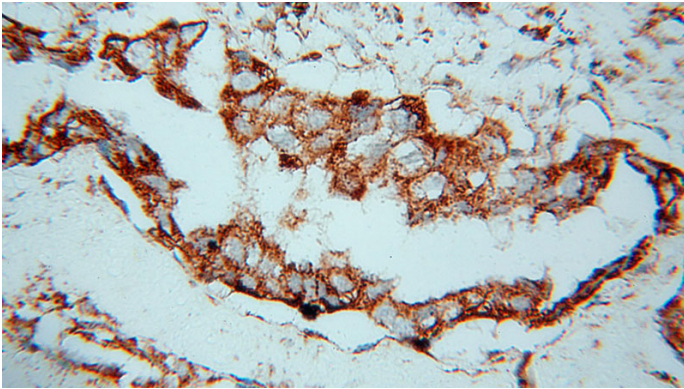
Dilutions



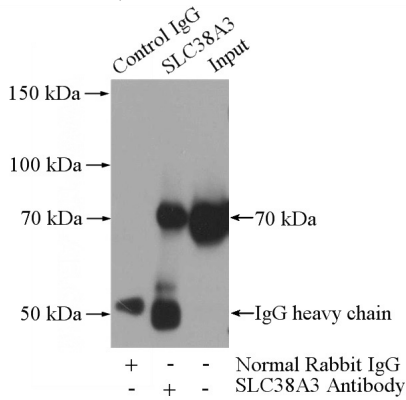
Immunohistochemical of paraffin-embedded human lung cancer using Catalog No:115374(SLC38A3 antibody) at dilution of 1:100 (under 10x lens)

SLC38A3 antibody

Catalog Number: 115374

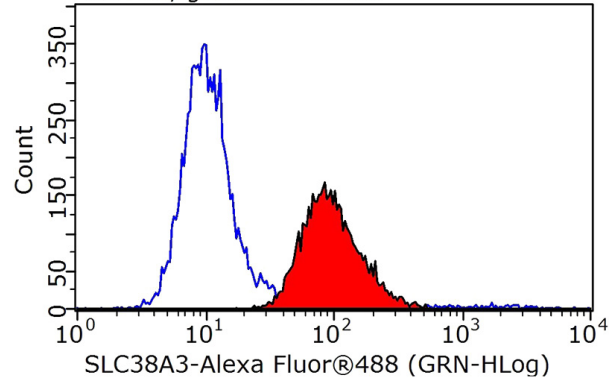


Immunohistochemical of paraffin-embedded human lung cancer using Catalog No:115374(SLC38A3 antibody) at dilution of 1:100 (under 40x lens)



IP Result of anti-SLC38A3 (IP:Catalog No:115374, 3ug; Detection:Catalog No:115374 1:1000) with mouse heart tissue lysate 4000ug.

Plot P03, gated on P01.R1



1X10⁶ HeLa cells were stained with 0.2ug SLC38A3 antibody (Catalog No:115374, red) and control antibody (blue). Fixed with 90% MeOH blocked with 3% BSA (30 min). Alexa Fluor 488-conjugated AffiniPure Goat Anti-Rabbit IgG(H+L) with dilution 1:1000.