

PSMA3 antibody



Catalog Number: 114374

Product name

PSMA3 antibody

ELISA, WB, IHC

Specificity

Human, Mouse, Rat; other species not tested.

Dilutions

Recommended Dilution:

WB: 1:200-1:2000

IHC: 1:20-1:200

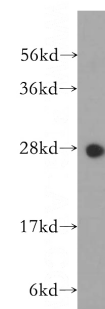
Antibody description

PSMA3 Rabbit Polyclonal antibody. Positive IHC detected in human lymphoma tissue. Positive WB detected in human lung tissue, HeLa cells, NIH/3T3 cells. Observed molecular weight by Western-blot: 28kd

Validations

Preparation

This antibody was obtained by immunization of PSMA3 recombinant protein (Accession Number: NM_002788). Purification method: Antigen affinity purified.



Formulation

PBS with 0.1% sodium azide and 50% glycerol pH 7.3.

human lung tissue were subjected to SDS PAGE followed by western blot with Catalog No:114374(PSMA3 antibody) at dilution of 1:400

Storage

Store at -20°C. DO NOT ALIQUOT

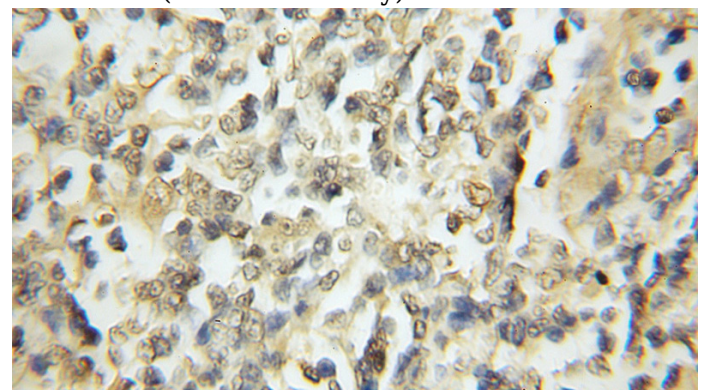
Clonality

Polyclonal

Ig Type

Rabbit IgG

Applications



Immunohistochemical of paraffin-embedded human lymphoma using Catalog No:114374(PSMA3 antibody) at dilution of 1:50 (under 10x lens)