

# Anti-Eftud2 antibody

Catalog Number: 176674

## Product name

Anti-Eftud2 antibody

## Specificity

Human, Mouse, Rat

## Antibody description

Mouse monoclonal antibody to Eftud2

## Preparation

This antigen of this antibody was peptide

## Formulation

Liquid, 1\*PBS (pH7.4), 0.2% BSA, 40% Glycerol.  
Preservative: 0.05% Sodium Azide.

## Storage

Store at +4°C after thawing. Aliquot store at -20°C or -80°C. Avoid repeated freeze / thaw cycles.

## Clonality

Monoclonal

## Ig Type

Mouse IgG1

## Applications

WB, ICC, IHC-P, FC

## Dilutions

WB: 1:1,000-1:2,000

ICC: 1:50-1:200

IHC-P: 1:50-1:200

FC: 1:50-1:100

## Validations

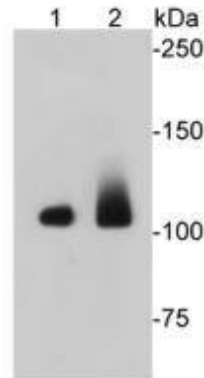


Fig1: Western blot analysis on different cell lysates using anti-EFTUD2 Mouse mAb. Positive control; Lane 1: Jurkat; Lane 2: NIH/3T3

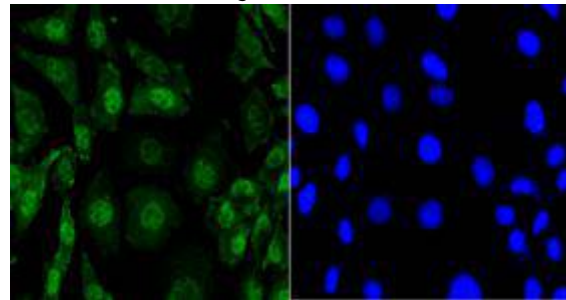


Fig2: Immunocytochemical staining of SH-SY-5Y cells using anti-EFTUD2 Mouse mAb

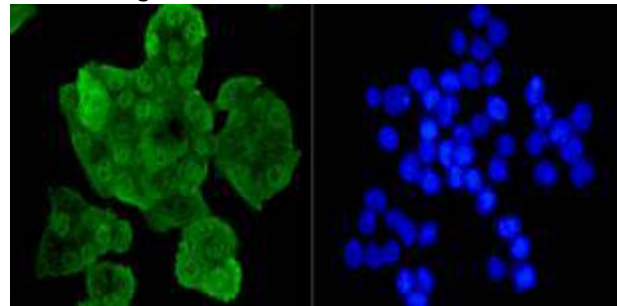


Fig3: Immunocytochemical staining of SW480 cells using anti-EFTUD2 Mouse mAb.

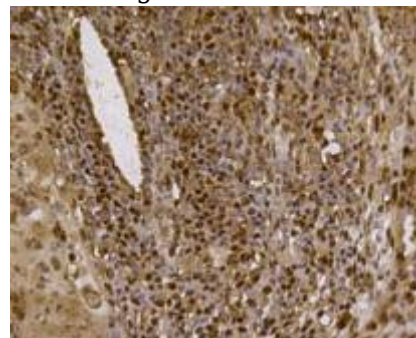


Fig4: Immunohistochemical analysis of paraffin-embedded human lung cancer tissue using anti-

EFTUD2 Mouse mAb.

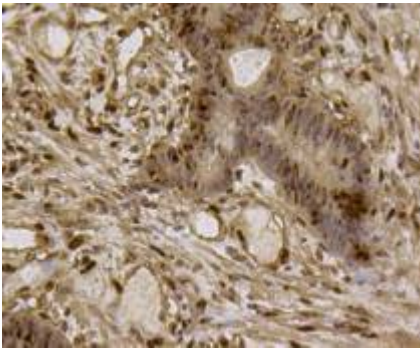


Fig5: Immunohistochemical analysis of paraffin-embedded human colon cancer tissue using anti-EFTUD2 Mouse mAb.

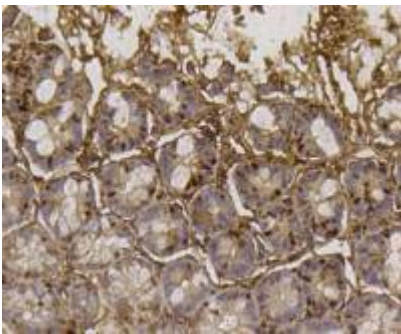
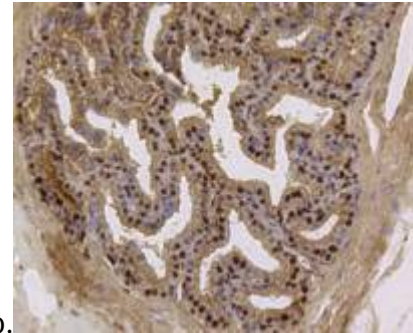


Fig6: Immunohistochemical analysis of paraffin-embedded mouse colon tissue using anti-EFTUD2 Mouse mAb.



Mouse mAb.

Fig7: Immunohistochemical analysis of paraffin-embedded mouse prostate tissue using anti-EFTUD2 Mouse mAb.

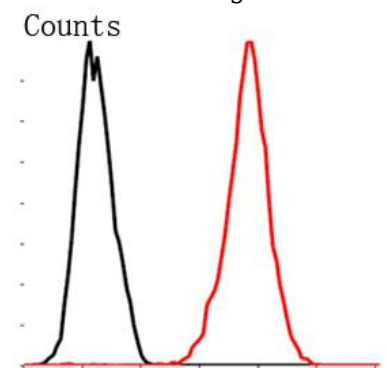


Fig8: Flow cytometric analysis of MCF-7 cells with EFTUD2 antibody at 1/100 dilution (red) compared with an unlabelled control (cells without incubation with primary antibody; black). Goat anti mouse IgG (FITC) was used as the secondary antibody.