

MLF1IP antibody

Catalog Number: 112674

Product name

MLF1IP antibody

IHC: 1:20-1:200

IF: 1:10-1:100

Specificity

Human, Mouse, Rat; other species not tested.

Antibody description

MLF1IP Rabbit Polyclonal antibody. Positive WB detected in HepG2 cells. Positive IHC detected in human testis tissue, human colon tissue, human gliomas tissue. Positive IF detected in HepG2 cells. Observed molecular weight by Western-blot: 46-48kd

Preparation

This antibody was obtained by immunization of MLF1IP recombinant protein (Accession Number: BC031520). Purification method: Antigen affinity purified.

Formulation

PBS with 0.02% sodium azide and 50% glycerol pH 7.3.

Storage

Store at -20°C. DO NOT ALIQUOT

Clonality

Polyclonal

Ig Type

Rabbit IgG

Applications

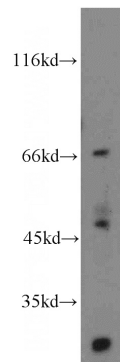
ELISA, WB, IHC, IF

Dilutions

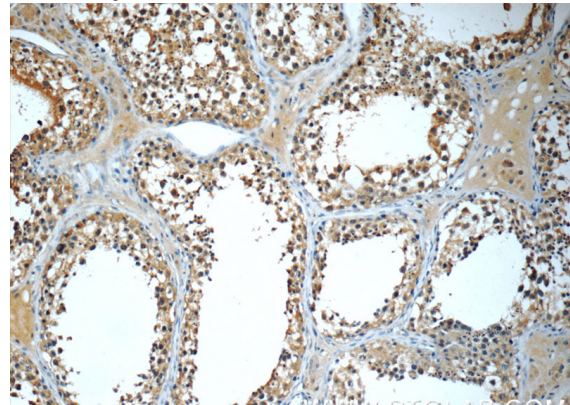
Recommended Dilution:

WB: 1:200-1:2000

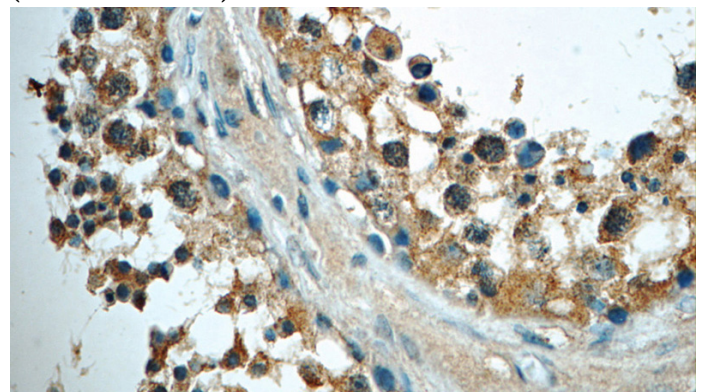
Validations



HepG2 cells were subjected to SDS PAGE followed by western blot with Catalog No:112674(MLF1IP antibody) at dilution of 1:500



Immunohistochemistry of paraffin-embedded human testis tissue slide using Catalog No:112674(MLF1IP Antibody) at dilution of 1:50 (under 10x lens)



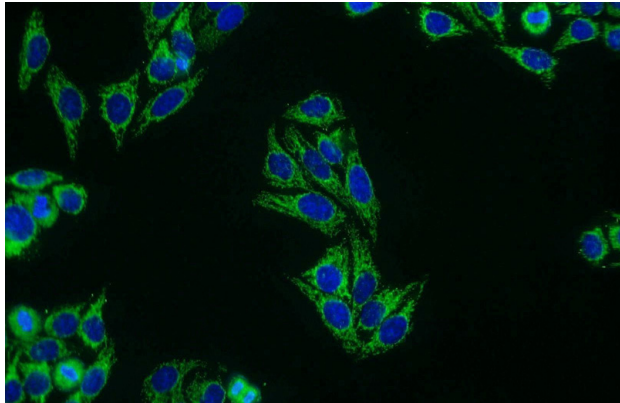
Immunohistochemistry of paraffin-embedded

MLF1IP antibody



Catalog Number: 112674

human testis tissue slide using Catalog No:112674(MLF1IP Antibody) at dilution of 1:50 (under 40x lens)



Immunofluorescent analysis of HepG2 cells using Catalog No:112674(MLF1IP Antibody) at dilution of 1:25 and Alexa Fluor 488-conjugated AffiniPure Goat Anti-Rabbit IgG(H+L)