

PTH2R antibody



Catalog Number: 114274

Product name

PTH2R antibody

Specificity

Human, Mouse, Rat; other species not tested.

Antibody description

PTH2R Rabbit Polyclonal antibody. Positive IHC detected in human pancreas cancer tissue, human renal cell carcinoma tissue. Positive WB detected in L02 cells, BxPC-3 cells, human testis tissue, mouse liver tissue, mouse pancreas tissue, mouse testis tissue. Observed molecular weight by Western-blot: 62-66 kDa

Preparation

This antibody was obtained by immunization of PTH2R recombinant protein (Accession Number: NM_005048). Purification method: Antigen affinity purified.

Formulation

PBS with 0.02% sodium azide and 50% glycerol pH 7.3.

Storage

Store at -20°C. DO NOT ALIQUOT

Clonality

Polyclonal

Ig Type

Rabbit IgG

Applications

ELISA, WB, IHC

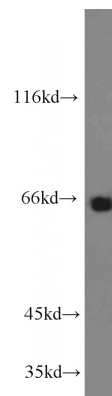
Dilutions

Recommended Dilution:

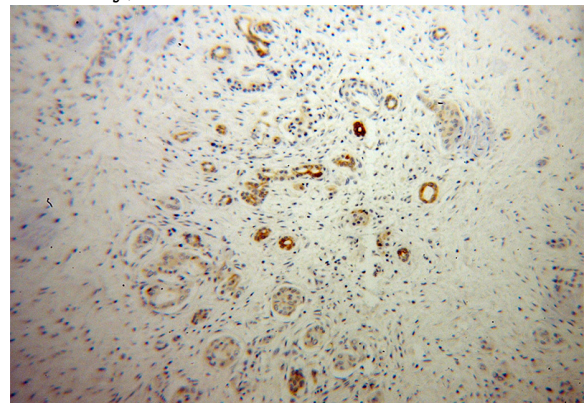
WB: 1:200-1:2000

IHC: 1:20-1:200

Validations



L02 cells were subjected to SDS PAGE followed by western blot with Catalog No:114274(PTH2R antibody) at dilution of 1:500



Immunohistochemical of paraffin-embedded human pancreas cancer using Catalog No:114274(PTH2R antibody) at dilution of 1:50 (under 10x lens)

Immunohistochemical of paraffin-embedded human pancreas cancer using Catalog No:114274(PTH2R antibody) at dilution of 1:50 (under 40x lens)