

# Human ECH1 (His Tag) recombinant protein



Catalog Number: 501274

## General Information

### Protein Construction

A DNA sequence encoding the mature form of human ECH1 (Q13011) (Thr34-Leu328) was expressed with a polyhistidine tag at the N-terminus.

### Organism

Human

### Expression Host

E. coli

## QC Testing

### Purity

> 90 % as determined by SDS-PAGE

### Endotoxin

Please contact us for more information.

### Stability

Samples are stable for up to twelve months from date of receipt at -70°C

### Predicted N terminal

His

### Molecular Mass

The recombinant human ECH1 consists of 310 amino acids and predicts a molecular mass of 34 KDa. It migrates as an approximately 34 KDa band

in SDS-PAGE under reducing conditions.

### Formulation

Lyophilized from sterile 20mM Tris, 0.1M NaCl, 10% Glycerol, pH 8.0.

1. 5 % trehalose and mannitol are added as protectants before lyophilization.

2. Please contact us for any concerns or special requirements.

## Usage Guide

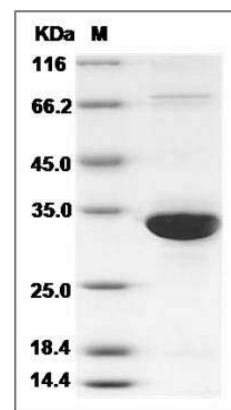
### Storage

Store it under sterile conditions at -20°C to -80°C. It is recommended that the protein be aliquoted for optimal storage. Avoid repeated freeze-thaw cycles.

### Reconstitution

Adding sterile water, prepare a stock solution of 0.25 mg/ml. Concentration is measured by UV-Vis.

### SDS-PAGE



Human ECH1 Protein (His Tag) SDS-PAGE