

Human MMP-12/MMP12 (catalytic domain) recombinant protein



Catalog Number: 502974

General Information

Gene Name Synonym

Macrophage elastase; Matrix metalloproteinase-12

Protein Construction

A DNA sequence encoding human MMP12 (NP_002417.2) (Gly106-Asn268) was expressed with a N-terminal Met and C-terminal 6His tag.

Organism

Human

Expression Host

E. coli

QC Testing

Activity

Measured by its ability to cleave the fluorogenic peptide substrate, Mca-PLGL-Dpa-AR-NH₂ (AnaSpec, Catalog # 27076). The specific activity is > 800 pmoles/min/μg.

Purity

> 90 % as determined by SDS-PAGE

Endotoxin

Please contact us for more information.

Stability

Samples are stable for up to twelve months from date of receipt at -70°C

Predicted N terminal

Met

Molecular Mass

The recombinant human MMP12 consists of 164 amino acids and predicts a molecular mass of 18.2 KDa. It migrates as an approximately 18 KDa band in SDS-PAGE under reducing conditions.

Formulation

Lyophilized from sterile 10 mM Hepes, 2 mM CaCl₂, 250 mM NaCl, pH 7.0.

1. 5 % trehalose and mannitol are added as protectants before lyophilization.
2. Please contact us for any concerns or special requirements.

Usage Guide

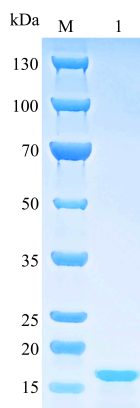
Storage

Store it under sterile conditions at -20°C to -80°C. It is recommended that the protein be aliquoted for optimal storage. Avoid repeated freeze-thaw cycles.

Reconstitution

Adding sterile water, prepare a stock solution of 0.25 mg/ml. Concentration is measured by UV-Vis.

SDS-PAGE



Human MMP12 / MMP-12 / HME Protein (catalytic domain) SDS-PAGE