

PLA2G16 Polyclonal Antibody



Catalog Number: 162974

Product name

PLA2G16 Polyclonal Antibody

Specificity

Human

Antibody description

Polyclonal antibody to PLA2G16

Preparation

Antigen: Recombinant fusion protein containing a sequence corresponding to amino acids 68-162 of human PLA2G16 (NP_009000.2).

Formulation

PBS with 0.02% sodium azide, 50% glycerol, pH7.3.

Storage

Store at -20°C. Avoid freeze / thaw cycles.

Clonality

Polyclonal

Ig Type

Rabbit IgG

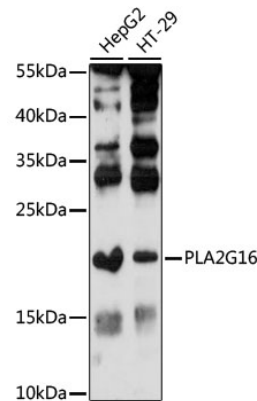
Applications

WB

Dilutions

WB 1:500 - 1:2000

Validations



Western blot - PLA2G16 Polyclonal Antibody

Western blot analysis of extracts of various cell lines, using PLA2G16 antibody at 1:1000 dilution. Secondary antibody: HRP Goat Anti-Rabbit IgG (H+L) at 1:10000 dilution. Lysates/proteins: 25ug per lane. Blocking buffer: 3% nonfat dry milk in TBST. Detection: ECL Enhanced Kit. Exposure time: 90s.