

# Anti-LDHA antibody



Catalog Number: 141974

## Product name

Anti-LDHA antibody

## Immunogen

[Rat LDH-A / LDHA \(His Tag\) recombinant protein](#)

## Specificity

Rat LDH-A / LDHA

## Antibody description

Rabbit Polyclonal to Rat LDHA

## Preparation

Produced in rabbits immunized with purified, recombinant Rat LDH-A / LDHA . LDH-A / LDHA specific IgG was purified by Rat LDH-A / LDHA affinity chromatography.

## Formulation

0.2 µm filtered solution in PBS

## Storage

This antibody can be stored at 2°C-8°C for one month without detectable loss of activity. Antibody products are stable for twelve months from date of receipt when stored at -20°C to -80°C.

Preservative-Free.

Sodium azide is recommended to avoid contamination (final concentration 0.05%-0.1%). It is toxic to cells and should be disposed of properly. Avoid repeated freeze-thaw cycles.

## Clonality

Polyclonal

## Ig Type

Rabbit IgG

## Applications

WB, ELISA, IP

## Dilutions

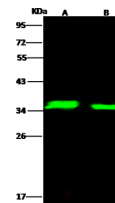
WB: 5-20 µg/ml

ELISA: 0.1-0.2 µg/ml

This antibody can be used at 0.1-0.2 µg/ml with the appropriate secondary reagents to detect Rat LDH-A / LDHA.

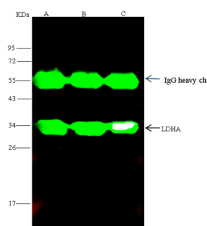
IP: 0.5-2 µl/mg of lysate

## Validations



Items	Lanes	A	B
Sample (whole cell lysate)		HeLa	A431
Sample Volume (µg/lane)		30	30
Gel	13% SDS-PAGE reducing gel		
Recommended Concentration	5-20 µg/ml		
Secondary Antibody	Dylight 800-labeled Antibody to Rabbit IgG (H+L), at 1:5000 dilution. Developed using Odyssey imaging system.		
Explanation	Predicted band size : 37 kDa Observed band size : 36 kDa		

## Rat LDH-A / LDHA Western blot (WB) 14750



Items	Lanes	A	B	C
Sample (whole cell lysate)		A431	HeLa	Jurkat
Sample quantity	0.5 mg			
IP antibody quantity	4 µL			
Protein G agarose	15 µL of 50% Protein G Agarose			
Gel	13% SDS-PAGE reducing gel			
Primary antibody	His-EE-RatLDHA antibody at 10 µg/ml			
Secondary antibody	Dylight 800-labeled antibody to rabbit IgG (H+L), at 1:5000 dilution			

## Rat LDH-A / LDHA Immunoprecipitation(IP) 14751