

CRMP5 antibody

Catalog Number: 109574

Product name

CRMP5 antibody

Specificity

Human, Mouse, Rat; other species not tested.

Antibody description

CRMP5 Rabbit Polyclonal antibody. Positive WB detected in mouse brain tissue. Positive IHC detected in human prostate cancer tissue. Observed molecular weight by Western-blot: 61kd

Preparation

This antibody was obtained by immunization of CRMP5 recombinant protein (Accession Number: NM_020134). Purification method: Antigen affinity purified.

Formulation

PBS with 0.1% sodium azide and 50% glycerol pH 7.3.

Storage

Store at -20°C. DO NOT ALIQUOT

Clonality

Polyclonal

Ig Type

Rabbit IgG

Applications

ELISA, WB, IHC

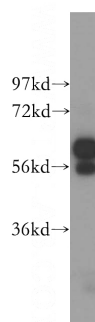
Dilutions

Recommended Dilution:

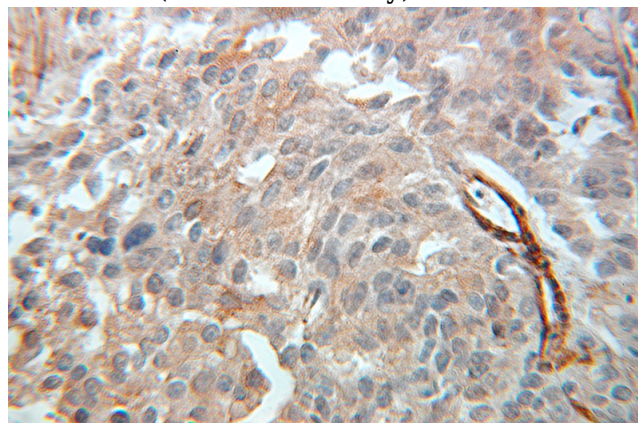
WB: 1:500-1:5000

IHC: 1:20-1:200

Validations



mouse brain tissue were subjected to SDS PAGE followed by western blot with Catalog No:109574(DPYSL5 antibody) at dilution of 1:1000



Immunohistochemical of paraffin-embedded human prostate cancer using Catalog No:109574(DPYSL5 antibody) at dilution of 1:100 (under 25x lens)