

# Anti-MFSD2A antibody



Catalog Number: 175574

## Product name

Anti-MFSD2A antibody

IHC-P:1:400-800

FC:0.2ug/test

## Specificity

Human, Mouse, Rat, Chicken, Dog, Pig, Cow, Horse, Rabbit

## Antibody description

Rabbit polyclonal antibody to MFSD2A

## Preparation

This antigen of this antibody was klh conjugated synthetic peptide derived from human mfsd2a 331-430/543

## Formulation

Liquid, 0.01M TBS(pH7.4) with 1% BSA, 0.03% Proclin300 and 50% Glycerol.

## Storage

Store at -20°C for one year. Avoid repeated freeze/thaw cycles. The lyophilized antibody is stable at room temperature for at least one month and for greater than a year when kept at -20°C. When reconstituted in sterile pH 7.4 0.01M PBS or diluent of antibody the antibody is stable for at least two weeks at 2-4°C.

## Clonality

Polyclonal

## Ig Type

Rabbit IgG

## Applications

WB, IHC-P, FC

## Dilutions

WB:1:500-2000

## Validations

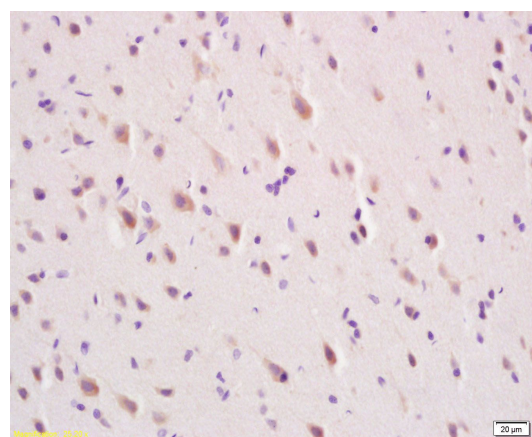


Fig1: Tissue/cell: rat brain tissue; 4% Paraformaldehyde-fixed and paraffin-embedded;; Antigen retrieval: citrate buffer ( 0.01M, pH 6.0 ), Boiling bathing for 15min; Block endogenous peroxidase by 3% Hydrogen peroxide for 30min; Blocking buffer (normal goat serum,C-0005) at 37°C for 20 min;; Incubation: Anti-MFSD2A Polyclonal Antibody, Unconjugated 1:200, overnight at 4°C, followed by conjugation to the secondary antibody(SP-0023) and DAB(C-0010)

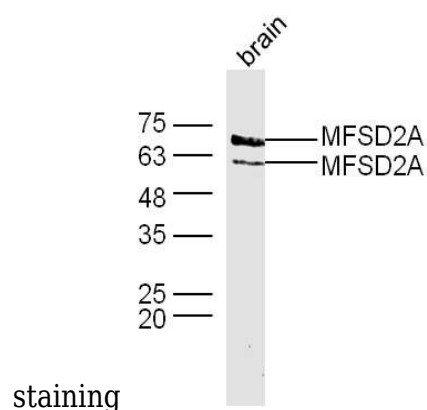


Fig2: Sample: Brain (Mouse) Lysate at 40 ug; Primary: Anti-MFSD2A at 1/300 dilution; Secondary: IRDye800CW Goat Anti-Rabbit IgG at 1/20000 dilution; Predicted band size: 60 kD; Observed band size: 60/65 kD

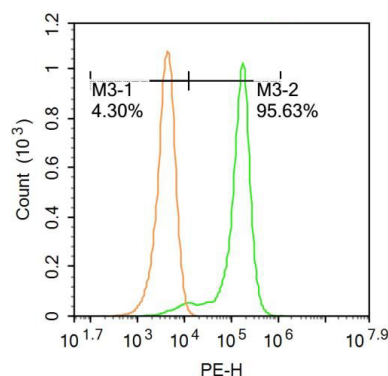


Fig3: Blank control:Molt-4.; Primary Antibody (green line): Rabbit Anti-MFSD2A antibody ;

Dilution: 0.2 $\mu$ g /10<sup>6</sup> cells;; Isotype Control Antibody (orange line): Rabbit IgG .; Secondary Antibody : Goat anti-rabbit IgG-PE; Dilution: 0.2 $\mu$ g /test.; Protocol; The cells were fixed with 4% PFA (10min at room temperature)and then permeabilized with 20% PBST for 20 min at -20°C. The cells were then incubated in 5%BSA to block non-specific protein-protein interactions for 30 min at at room temperature .Cells stained with Primary Antibody for 30 min at room temperature. The secondary antibody used for 40 min at room temperature. Acquisition of 20,000 events was performed.