

HSPA2 antibody



Catalog Number: 111574

Product name

HSPA2 antibody

Specificity

Human, Mouse, Rat; other species not tested.

Antibody description

HSPA2 Rabbit Polyclonal antibody. Positive IHC detected in human testis tissue, human prostate hyperplasia tissue. Positive FC detected in HeLa cells. Positive IP detected in mouse skeletal muscle tissue. Positive WB detected in human ileum tissue, A431 cells, HeLa cells, human brain tissue, human kidney tissue, human skeletal muscle tissue, MCF7 cells. Observed molecular weight by Western-blot: 65-70 kDa

Preparation

This antibody was obtained by immunization of HSPA2 recombinant protein (Accession Number: NM_021979). Purification method: Antigen affinity purified.

Formulation

PBS with 0.1% sodium azide and 50% glycerol pH 7.3.

Storage

Store at -20°C. DO NOT ALIQUOT

Clonality

Polyclonal

Ig Type

Rabbit IgG

Applications

ELISA, WB, IHC, FC, IP

Dilutions

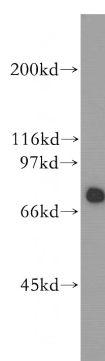
Recommended Dilution:

WB: 1:500-1:5000

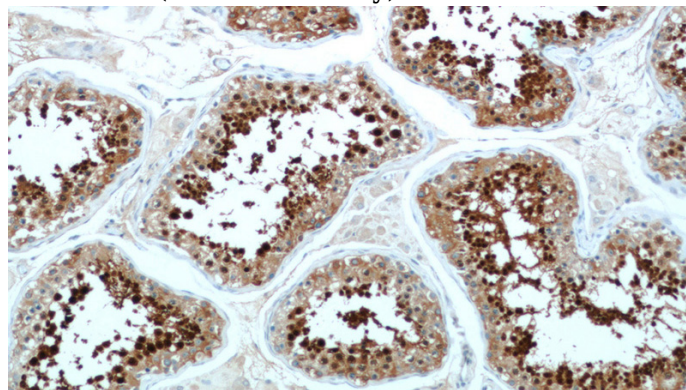
IP: 1:500-1:5000

IHC: 1:20-1:200

Validations



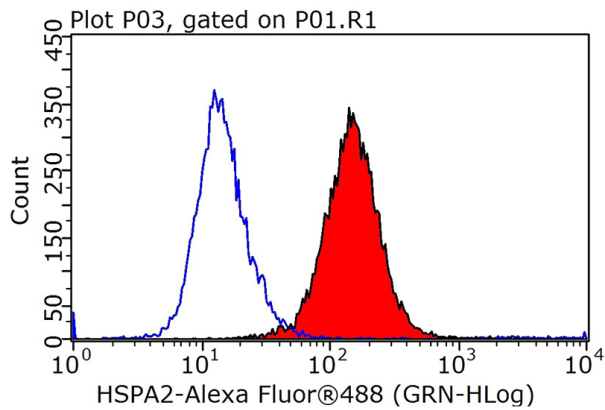
human ileum tissue were subjected to SDS PAGE followed by western blot with Catalog No:111574(HSPA2 antibody) at dilution of 1:300



Immunohistochemical of paraffin-embedded human testis using Catalog No:111574(HSPA2 antibody) at dilution of 1:50 (under 10x lens)

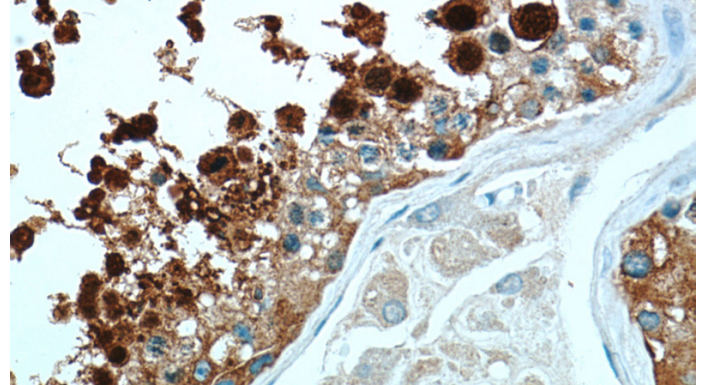
HSPA2 antibody

Catalog Number: 111574



1X10⁶ HeLa cells were stained with 0.2ug HSPA2 antibody (Catalog No:111574, red) and control antibody (blue). Fixed with 90% MeOH blocked with 3% BSA (30 min). Alexa Fluor 488-conjugated AffiniPure Goat Anti-Rabbit IgG(H+L) with dilution 1:1000.

IP Result of anti-HSPA2 (IP:Catalog No:111574, 4ug; Detection:Catalog No:111574 1:1000) with mouse skeletal muscle tissue lysate 4000ug.



Immunohistochemical of paraffin-embedded human testis using Catalog No:111574(HSPA2 antibody) at dilution of 1:50 (under 40x lens)

