

## General Information

### Gene Name Synonym

NALase; EC 4.1.3.3; N-acetylneuraminase  
pyruvate-lyase; N-acetylneuraminic acid aldolase;  
Sialate lyase; Sialate-pyruvate lyase; Sialic acid  
aldolase; Sialic acid lyase

### Protein Construction

A DNA sequence encoding the human NPL  
(NP\_110396.1) 1-193 aa was fused with the N-  
terminal GST tag

### Organism

Human

### Expression Host

E. coli

## QC Testing

### Activity

Not tested.

### Endotoxin

Please contact the lab for more information.

### Stability

Aliquot and store at -20°C to -80°C for up to 6  
months. Avoid freeze thaw cycles.

### Formulation

PBS (58mM Na<sub>2</sub>HPO<sub>4</sub>, 17mM NaH<sub>2</sub>PO<sub>4</sub>, 68mM

NaCl, pH7.4).

## Usage Guide

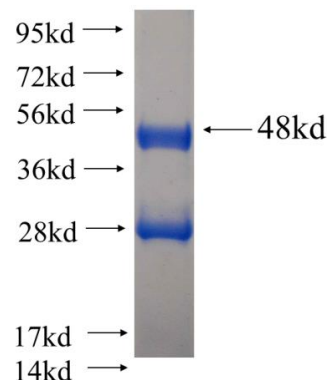
### Storage

Store it under sterile conditions at -20°C to -80°C.  
It is recommended that the protein be aliquoted  
for optimal storage. Avoid repeated freeze-thaw  
cycles.

### Reconstitution

Reconstitute at 0.25 µg/µl in sterile water for  
short-term storage. Reconstitution with 50%  
glycerol solution is recommended for longer term  
storage (see Stability and Storage for more  
details). If a different concentration is needed for  
your purposes please adjust the reconstitution  
volume as required (please note: the ion  
concentration of the final solution will vary  
according to the volume used). Note: Centrifuge  
vial before opening. When reconstituting, gently  
pipet and wash down the sides of the vial to  
ensure full recovery of the protein into solution.

### SDS-PAGE



Recombinant human NPL SDS-PAGE