

Anti-Beta-Tubulin antibody



Catalog Number: 104174

Product name

Anti-Beta-Tubulin antibody

Specificity

Human Beta-Tubulin

Antibody description

Mouse monoclonal to Beta-Tubulin

Preparation

This antibody was produced from a hybridoma resulting from the fusion of a mouse myeloma with B cells obtained from a mouse immunized with a synthetic peptide corresponding to the N-terminus of the human beta-tubulin. The IgG fraction of the cell culture supernatant was purified by Protein A affinity chromatography.

Formulation

0.2 μ m filtered solution in PBS with 5% trehalose

Storage

This antibody can be stored at 2°C-8°C for one month without detectable loss of activity. Antibody products are stable for twelve months from date of receipt when stored at -20°C to -80°C.

Preservative-Free.

Sodium azide is recommended to avoid contamination (final concentration 0.05%-0.1%). It is toxic to cells and should be disposed of properly. Avoid repeated freeze-thaw cycles.

Clonality

Monoclonal

Ig Type

Mouse IgG2b

Applications

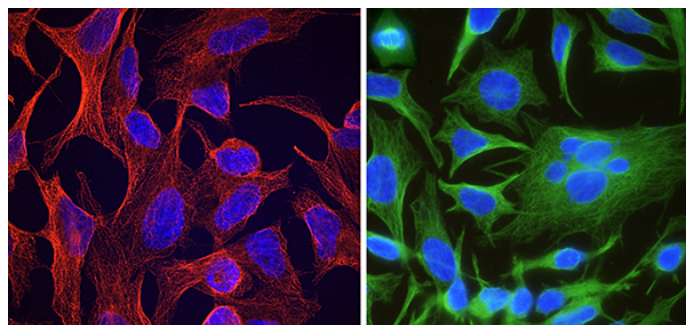
WB, IF, ICC/IF

Dilutions

WB: 1/1000-1/2000

ICC/IF: 1/50-1/200

Validations



Beta-Tubulin Loading Control Antibody, Mouse Mab, Immunofluorescence

Immunofluorescence staining of Human Beta-Tubulin in HeLa cells. Cells were fixed with 4% PFA, permeabilized with 1% Triton X-100 in PBS, blocked with 10% serum, and incubated with Mouse anti-Human Beta-Tubulin monoclonal antibody at 4°C overnight. Then cells were stained with the Alexa Fluor® 594-conjugated (left panel, captured by laser confocal scanning microscope) and Alexa Fluor® 488-conjugated (right panel, captured by fluorescence microscope) Goat Anti-mouse IgG secondary antibody, counterstained with DAPI (blue). Positive staining was localized to



cytoskeleton.

Beta-Tubulin Loading Control Antibody, Mouse Mab, Western blot