

Human MKK6/MEK6/MAP2K6 (207 Asp, 211 Asp) recombinant protein



Catalog Number: 503174

General Information

Gene Name Synonym

MAP kinase kinase 6; MAPKK 6; EC 2.7.12.2; MAPK/ERK kinase 6; MEK 6; Stress-activated protein kinase kinase 3; SAPK kinase 3; SAPKK-3; SAPKK3

Protein Construction

A DNA sequence encoding the human MAP2K6 (P52564-1) (Met 1-Asp 334, 207Asp, 211Asp) was expressed and purified with two additional amino acids (Gly & Pro) at the N-terminus.

Organism

Human

Expression Host

Baculovirus-Insect Cells

QC Testing

Activity

Kinase activity untested

Purity

> 85 % as determined by SDS-PAGE

Endotoxin

< 1.0 EU per µg of the protein as determined by the LAL method

Stability

Samples are stable for up to twelve months from date of receipt at -70°C

Predicted N terminal

Gly

Molecular Mass

The secreted recombinant human MAP2K6 consists of 336 amino acids and predicts a molecular mass of 37.7 KDa. The apparent molecular mass of the protein is approximately 38 KDa in SDS-PAGE under reducing conditions due to glycosylation.

Formulation

Lyophilized from sterile 20mM Tris, 500mM NaCl, 10% glycerol, pH 8.0.

1. 5 % trehalose and mannitol are added as protectants before lyophilization.

2. Please contact us for any concerns or special requirements.

Usage Guide

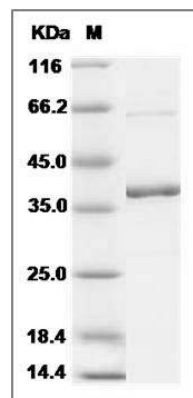
Storage

Store it under sterile conditions at -20°C to -80°C. It is recommended that the protein be aliquoted for optimal storage. Avoid repeated freeze-thaw cycles.

Reconstitution

Adding sterile water, prepare a stock solution of 0.25 mg/ml. Concentration is measured by UV-Vis.

SDS-PAGE



Human MKK6 / MEK6 / MAP2K6 Protein (207 Asp, 211 Asp) SDS-PAGE