

Anti-IFT88 Rabbit antibody



Catalog Number: 168874

Product name

Anti-IFT88 Rabbit antibody

Specificity

Human, Mouse, Rat

Antibody description

IFT88 Rabbit monoclonal antibody

Preparation

Antigen: A synthetic peptide of human IFT88

Formulation

50nM Tris-Glycine(pH 7.4), 0.15M NaCl, 40%Glycerol, 0.01% sodium azide and 0.05% BSA.

Storage

Store at 4°C short term. Store at -20°C long term. Avoid freeze / thaw cycle.

Clonality

Monoclonal

Ig Type

Rabbit IgG

Applications

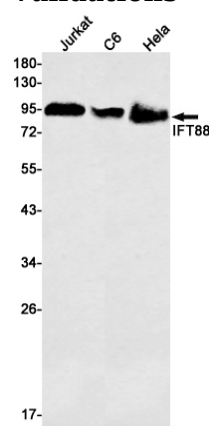
WB, FC

Dilutions

WB: 1/2000-1/10000

FC: 1/50

Validations



Western blot detection of IFT88 in Jurkat, C6, HeLa cell lysates using IFT88 Rabbit mAb(1:1000 diluted). Predicted band size: 94kDa. Observed band size: 94kDa.