

RPL18A antibody



Catalog Number: 114874

Product name

RPL18A antibody

IHC: 1:20-1:200

IF: 1:10-1:100

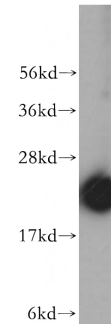
Specificity

Human, Mouse, Rat; other species not tested.

Validations

Antibody description

RPL18A Rabbit Polyclonal antibody. Positive WB detected in HepG2 cells, HeLa cells, human brain tissue, mouse lung tissue, PC-3 cells. Positive IHC detected in human prostate cancer tissue. Positive IF detected in HepG2 cells. Observed molecular weight by Western-blot: 23kd



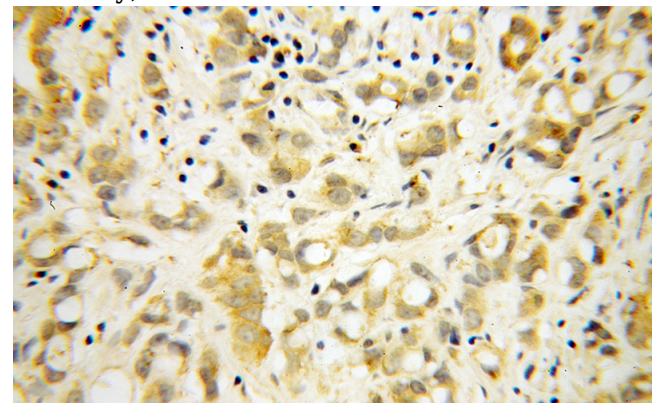
Preparation

This antibody was obtained by immunization of RPL18A recombinant protein (Accession Number: NM_000980). Purification method: Antigen affinity purified.

HepG2 cells were subjected to SDS PAGE followed by western blot with Catalog No:114874(RPL18A antibody) at dilution of 1:400

Formulation

PBS with 0.02% sodium azide and 50% glycerol pH 7.3.



Storage

Store at -20°C. DO NOT ALIQUOT

Clonality

Polyclonal

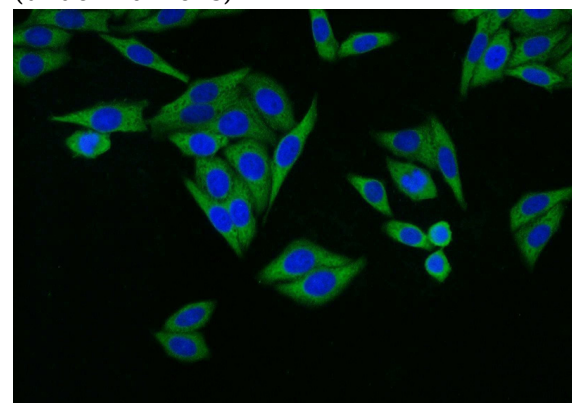
Immunohistochemical of paraffin-embedded human prostate cancer using Catalog No:114874(RPL18A antibody) at dilution of 1:100 (under 40x lens)

Ig Type

Rabbit IgG

Applications

ELISA, WB, IHC, IF



Dilutions

Recommended Dilution:

WB: 1:200-1:1000

Immunofluorescent analysis of HepG2 cells using

RPL18A antibody



Catalog Number: 114874

Catalog No:114874(RPL18A Antibody) at dilution of 1:25 and Alexa Fluor 488-conjugated AffiniPure Goat Anti-Rabbit IgG(H+L)