

Anti-IKK alpha/beta Rabbit antibody



Catalog Number: 167474

Product name

Anti-IKK alpha/beta Rabbit antibody

Specificity

Human, Mouse, Rat

Antibody description

IKK alpha/beta Rabbit polyclonal antibody

Preparation

Antigen: A synthesized peptide derived from human IKK alpha+beta

Formulation

Rabbit IgG in phosphate buffered saline , pH 7.4, 150mM NaCl, 0.02% sodium azide and 50% glycerol.

Storage

Store at 4°C short term. Store at -20°C long term. Avoid freeze / thaw cycle.

Clonality

Polyclonal

Ig Type

Rabbit IgG

Applications

WB, ICC/IF, IP

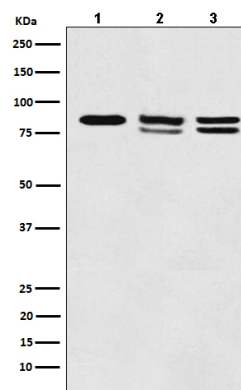
Dilutions

WB: 1/500-1/1000

ICC/IF: 1/50-1/100

IP: 1/50

Validations



Western blot analysis of IKK alpha+beta expression in (1) A431 cell lysate; (2) 293T cell lysate; (3) Mouse kidney lysate.