

Anti-UBCH8 / UBE2L6 antibody



Catalog Number: 104474

Product name

Anti-UBCH8 / UBE2L6 antibody

Immunogen

[Human UBCH8 / UBE2L6 \(His Tag\) recombinant protein](#)

Specificity

Human UBCH8 / UBE2L6

Antibody description

Rabbit polyclonal to UBCH8 / UBE2L6

Preparation

Produced in rabbits immunized with purified, recombinant Human UBCH8 / UBE2L6 (rh UBCH8 / UBE2L6; O14933-1; Met1-Ser153). UBCH8 / UBE2L6 specific IgG was purified by Human UBCH8 / UBE2L6 affinity chromatography.

Formulation

0.2 µm filtered solution in PBS with 5% trehalose

Storage

This antibody can be stored at 2°C-8°C for one month without detectable loss of activity. Antibody products are stable for twelve months from date of receipt when stored at -20°C to -80°C.

Preservative-Free.

Sodium azide is recommended to avoid contamination (final concentration 0.05%-0.1%). It is toxic to cells and should be disposed of properly. Avoid repeated freeze-thaw cycles.

Clonality

Polyclonal

Ig Type

Rabbit IgG

Applications

ELISA, WB, IP

Dilutions

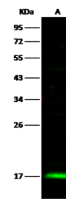
WB: 2-5 µg/mL

ELISA: 0.1-0.2 µg/mL

This antibody can be used at 0.1-0.2 µg/mL with the appropriate secondary reagents to detect Human UBCH8 / UBE2L6. The detection limit for Human UBCH8 / UBE2L6 is approximately 0.00245 ng/well.

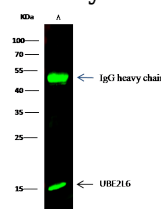
IP: 1-4 µg/mg of lysate

Validations



Items	Lanes	A
Sample (whole cell lysate)		Daudi
Sample Volume (µg/lane)		20
Gel		13% SDS-PAGE reducing gel
Recommended Concentration		2.5 µg/ml
Secondary Antibody		Dylight 800 labeled Antibody To Rabbit IgG(H+L), at 1:5000 dilution.

UBCH8 / UBE2L6 Antibody, Rabbit PAb, Antigen Affinity Purified, Western blot



Items	Lanes	A	B
Sample (whole cell lysate)		K562	Jurkat
Sample quantity		0.5 mg	
IP antibody quantity		2 µg	
Protein G agarose		15 µl of 50% Protein G Agarose	
Gel		13% SDS-PAGE reducing gel	
Primary antibody		UBE2L6 antibody at 5 µg/ml [Cat# 12641-REP21]	
Secondary antibody		Dylight 800-labeled antibody to rabbit IgG (H+L), at 1:5000 dilution.	

UBCH8 / UBE2L6 Antibody, Rabbit PAb, Antigen Affinity Purified, Immunoprecipitation