

PABPC1,PABP antibody



Catalog Number: 113474

Product name

PABPC1,PABP antibody

Recommended Dilution:

WB: 1:500-1:5000

Specificity

Human,Mouse,Rat; other species not tested.

IP: 1:200-1:2000

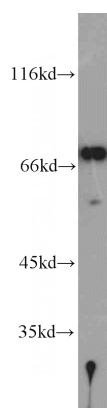
IHC: 1:20-1:200

Antibody description

PABPC1,PABP Rabbit Polyclonal antibody. Positive IHC detected in human pancreas tissue, human testis tissue. Positive IF detected in MCF-7 cells. Positive FC detected in MCF-7 cells. Positive WB detected in mouse testis tissue, HeLa cells, PC-3 cells, rat testis tissue. Positive IP detected in mouse testis tissue. Observed molecular weight by Western-blot: 71kd

IF: 1:10-1:100

Validations



Preparation

This antibody was obtained by immunization of PABPC1,PABP recombinant protein (Accession Number: XM_047421694). Purification method: Antigen affinity purified.

mouse testis tissue were subjected to SDS PAGE followed by western blot with Catalog No:113474(PABPC1,PABP antibody) at dilution of 1:1000

Formulation

PBS with 0.02% sodium azide and 50% glycerol pH 7.3.

Storage

Store at -20°C. DO NOT ALIQUOT

Clonality

Polyclonal

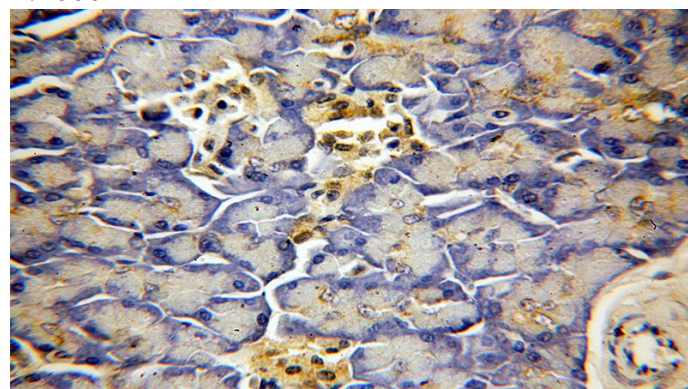
Ig Type

Rabbit IgG

Applications

ELISA, WB, IHC, IF, FC, IP

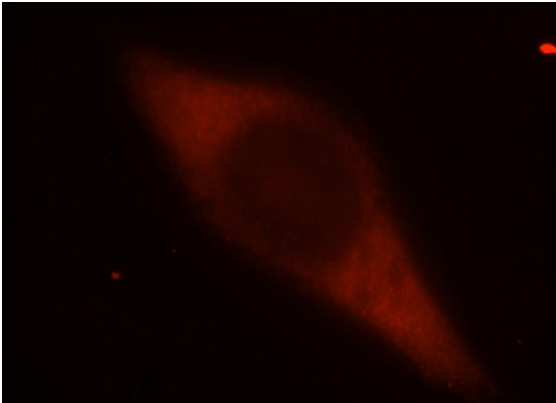
Dilutions



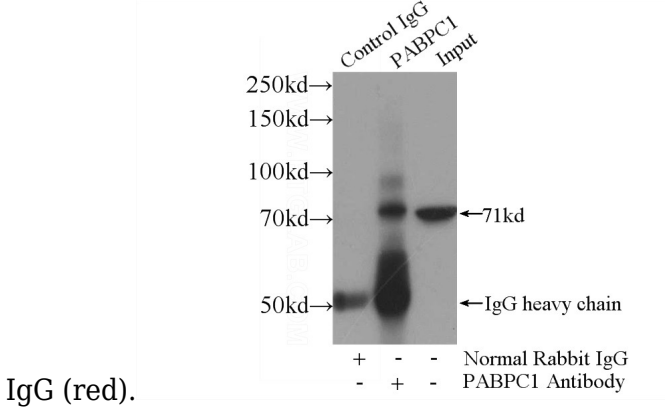
Immunohistochemical of paraffin-embedded human pancreas using Catalog No:113474(PABPC1,PABP antibody) at dilution of 1:50 (under 40x lens)

PABPC1,PABP antibody

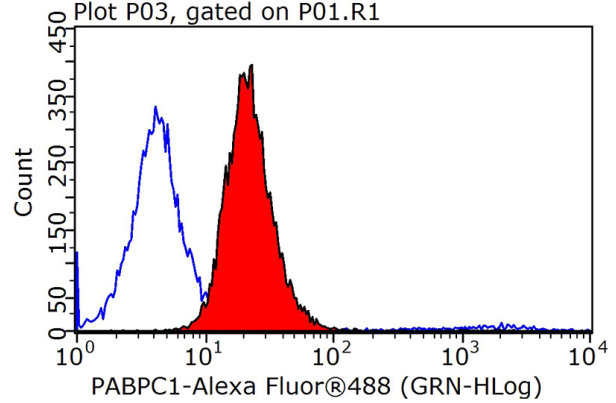
Catalog Number: 113474



Immunofluorescent analysis of MCF-7 cells, using PABPC1 antibody Catalog No:113474 at 1:25 dilution and Rhodamine-labeled goat anti-rabbit



IP Result of anti-PABPC1,PABP (IP:Catalog No:113474, 4ug; Detection:Catalog No:113474 1:700) with mouse testis tissue lysate 4000ug.



1X10⁶ MCF-7 cells were stained with 0.2ug PABPC1,PABP antibody (Catalog No:113474, red) and control antibody (blue). Fixed with 90% MeOH blocked with 3% BSA (30 min). Alexa Fluor 488-conjugated AffiniPure Goat Anti-Rabbit IgG(H+L) with dilution 1:1000.