

ESR2 antibody



Catalog Number: 110474

Product name

ESR2 antibody

Specificity

Human, Mouse, Rat; other species not tested.

Antibody description

ESR2 Rabbit Polyclonal antibody. Positive WB detected in NIH/3T3 cells, human brain tissue, mouse brain tissue, mouse testis tissue, PC-3 cells, SH-SY5Y cells. Positive IHC detected in human cervix tissue, human ovary tumor tissue. Observed molecular weight by Western-blot: 50 kDa

Preparation

This antibody was obtained by immunization of ESR2 recombinant protein (Accession Number: XM_047431078). Purification method: Antigen affinity purified.

Formulation

PBS with 0.02% sodium azide and 50% glycerol pH 7.3.

Storage

Store at -20°C. DO NOT ALIQUOT

Clonality

Polyclonal

Ig Type

Rabbit IgG

Applications

ELISA, IHC, WB

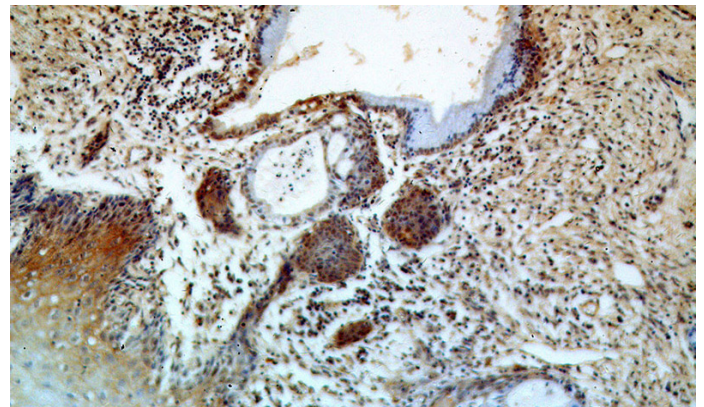
Dilutions

Recommended Dilution:

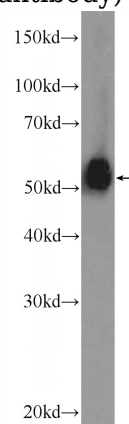
WB: 1:1000-1:10000

IHC: 1:20-1:200

Validations



Immunohistochemical of paraffin-embedded human cervix using Catalog No:110474(ESR2 antibody) at dilution of 1:50 (under 10x lens)



NIH/3T3 cells were subjected to SDS PAGE followed by western blot with Catalog No:110474(ESR2 Antibody) at dilution of 1:2000