

Anti-Phospho-FOXO3A (Ser235) Rabbit antibody



Catalog Number: 169074

Product name

WB, IHC-P

Anti-Phospho-FOXO3A (Ser235) Rabbit antibody

Dilutions

Specificity

WB: 1/500-1/2000

Human, Mouse, Rat

IHC: 1/50-1/200

Antibody description

Phospho-FOXO3A (Ser235) Rabbit polyclonal antibody

Preparation

Antigen: A synthesized peptide derived from human FoxO3a

Formulation

Rabbit IgG in phosphate buffered saline , pH 7.4, 150mM NaCl, 0.02% sodium azide and 50% glycerol.

Storage

Store at 4°C short term. Store at -20°C long term. Avoid freeze / thaw cycle.

Clonality

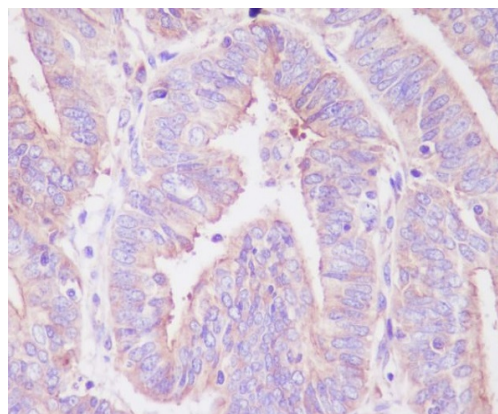
Polyclonal

Ig Type

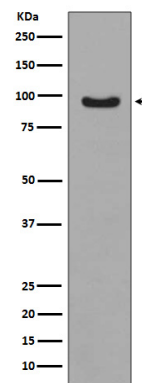
Rabbit IgG

Applications

Validations



Immunohistochemical analysis of paraffin-embedded human uterus cancer, using Phospho-



FoxO3a (S253) Antibody.

Western blot analysis of Phospho-FoxO3a (S253) expression in MCF-7 cell lysate treated with IGF.