

## General Information

### Gene Name Synonym

14 kDa lectin; Beta-galactoside-binding lectin L-14-I; Galaptin; Lactose-binding lectin 1; Lectin galactoside-binding soluble 1; RL 14.5; S-Lac lectin 1

### Protein Construction

A DNA sequence encoding the rat IL20 (P11762) (Leu25-Leu176) was expressed and purified.

### Organism

Rat

### Expression Host

E. coli

## QC Testing

### Purity

> 85 % as determined by SDS-PAGE

### Endotoxin

Please contact us for more information.

### Stability

Samples are stable for up to twelve months from date of receipt at -70°C

### Predicted N terminal

Leu 25

### Molecular Mass

The recombinant rat IL20 consists of 153 amino

acids and has a predicted molecular mass of 17.7 kDa. As a result of glycosylation, the apparent molecular mass of the recombinant protein is approximately 17 kDa in SDS-PAGE under reducing conditions.

### Formulation

Lyophilized from sterile PBS, 20% Glycerol, pH 7.4.

1. 5 % trehalose and mannitol are added as protectants before lyophilization.
2. Please contact us for any concerns or special requirements.

## Usage Guide

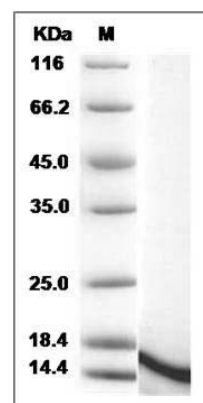
### Storage

Store it under sterile conditions at -20°C to -80°C. It is recommended that the protein be aliquoted for optimal storage. Avoid repeated freeze-thaw cycles.

### Reconstitution

Adding sterile water, prepare a stock solution of 0.25 mg/ml. Concentration is measured by UV-Vis.

### SDS-PAGE



Rat IL20 / Interleukin-20 Protein SDS-PAGE