

# Human TGFBI (His Tag) recombinant protein



Catalog Number: 503074

## General Information

### Gene Name Synonym

Kerato-epithelin; RGD-containing collagen-associated protein

### Protein Construction

A DNA sequence encoding the extracellular domain of human beta IG-H3 (NP\_000349.1) precursor (Met 1-His 683) was expressed, fused with a polyhistidine tag at the C-terminus.

### Organism

Human

### Expression Host

Human Cells

## QC Testing

### Purity

> 75 % as determined by SDS-PAGE

### Endotoxin

< 1.0 EU per  $\mu\text{g}$  of the protein as determined by the LAL method

### Stability

Samples are stable for up to twelve months from date of receipt at  $-70^{\circ}\text{C}$

### Predicted N terminal

Gly 24

### Molecular Mass

The secreted recombinant human beta IG-H3

comprises 671 amino acids with a predicted molecular mass of 74 kDa. As a result of glycosylation, the apparent molecular mass of rh beta IG-H3 is approximately 65 kDa in SDS-PAGE under reducing conditions.

### Formulation

Lyophilized from sterile PBS, pH 7.4

1. 5 % trehalose and mannitol are added as protectants before lyophilization.

2. Please contact us for any concerns or special requirements.

## Usage Guide

### Storage

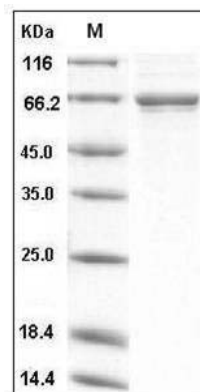
Store it under sterile conditions at  $-20^{\circ}\text{C}$  to  $-80^{\circ}\text{C}$ .

It is recommended that the protein be aliquoted for optimal storage. Avoid repeated freeze-thaw cycles.

### Reconstitution

Adding sterile water, prepare a stock solution of 0.25 mg/ml. Concentration is measured by UV-Vis.

### SDS-PAGE



Human TGFBI / BIGH3 Protein (His Tag) SDS-PAGE