

Human CDC42BPB (His & GST Tag) recombinant protein



Catalog Number: 502074

General Information

Gene Name Synonym

CDC42-binding protein kinase beta; DMPK-like beta; Myotonic dystrophy kinase-related CDC42-binding kinase beta

Protein Construction

A DNA sequence encoding the amino acid (Met 1-His 427) of human CDC42BPB (Q9Y5S2) was fused with the N-terminal polyhistidine-tagged GST tag at the N-terminus.

Organism

Human

Expression Host

Baculovirus-Insect Cells

QC Testing

Activity

No Kinase Activity

Purity

> 94 % as determined by SDS-PAGE

Endotoxin

< 1.0 EU per μg of the protein as determined by the LAL method

Stability

Samples are stable for up to twelve months from date of receipt at -70°C

Predicted N terminal

Met

Molecular Mass

The recombinant human CDC42BPB/GST chimera consists of 709 amino acids and has a calculated molecular mass of 82.4 kDa. It migrates as an approximately 70 kDa band in SDS-PAGE under reducing conditions.

Formulation

Lyophilized from sterile 50mM PBS, 500mM NaCl, 10% gly, 2mM GSH, pH 7.4

1. 5 % trehalose and mannitol are added as protectants before lyophilization.

2. Please contact us for any concerns or special requirements.

Usage Guide

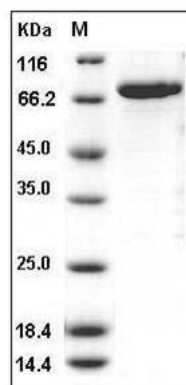
Storage

Store it under sterile conditions at -20°C to -80°C . It is recommended that the protein be aliquoted for optimal storage. Avoid repeated freeze-thaw cycles.

Reconstitution

Adding sterile water, prepare a stock solution of 0.25 mg/ml. Concentration is measured by UV-Vis.

SDS-PAGE



Human CDC42BPB Protein (His & GST Tag) SDS-PAGE