

TPM1 Polyclonal Antibody

Catalog Number: 160764

Product name

TPM1 Polyclonal Antibody

Specificity

Human, Mouse, Rat, Zebrafish

Antibody description

Polyclonal antibody to TPM1

Preparation

Antigen: Recombinant fusion protein containing a sequence corresponding to amino acids 1-245 of human TPM1 (NP_001018008.1).

Formulation

PBS with 0.02% sodium azide, 50% glycerol, pH7.3.

Storage

Store at -20°C. Avoid freeze / thaw cycles.

Clonality

Polyclonal

Ig Type

Rabbit IgG

Applications

WB, IHC, IF

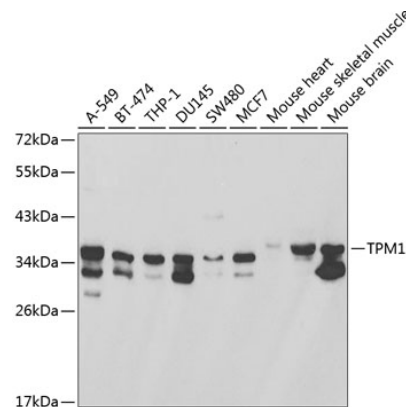
Dilutions

WB 1:500 - 1:2000

IHC 1:50 - 1:200

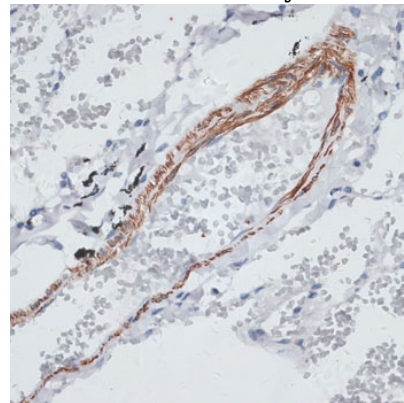
IF 1:50 - 1:200

Validations



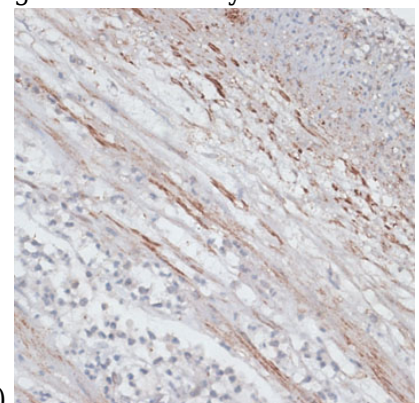
Western blot - TPM1 Polyclonal Antibody

Western blot analysis of extracts of various cell lines, using TPM1 antibody at 1:1000 dilution. Secondary antibody: HRP Goat Anti-Rabbit IgG (H+L) at 1:10000 dilution. Lysates/proteins: 25ug per lane. Blocking buffer: 3% nonfat dry milk in TBST.



Immunohistochemistry - TPM1 Polyclonal Antibody

Immunohistochemistry of paraffin-embedded human lung using TPM1 antibody at dilution of



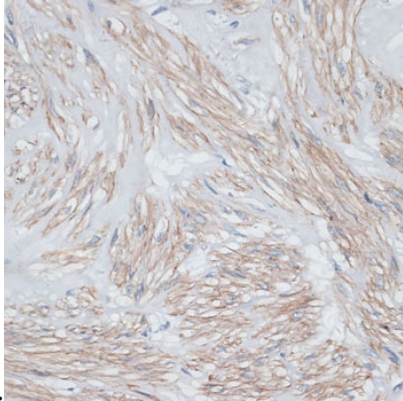
1:100 (40x lens).

TPM1 Polyclonal Antibody

Catalog Number: 160764

Immunohistochemistry - TPM1 Polyclonal Antibody

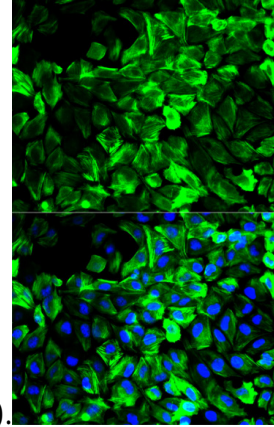
Immunohistochemistry of paraffin-embedded human appendix using TPM1 antibody at dilution



of 1:100 (40x lens).

Immunohistochemistry - TPM1 Polyclonal Antibody

Immunohistochemistry of paraffin-embedded human uterus using TPM1 antibody at dilution of



1:100 (40x lens).

Immunofluorescence - TPM1 Polyclonal Antibody

Immunofluorescence analysis of HeLa cells using TPM1 antibody . Blue: DAPI for nuclear staining.