

# Anti-EEF2/Elongation factor 2 (6E12) Mouse antibody



Catalog Number: 168364

## Product name

Anti-EEF2/Elongation factor 2 (6E12) Mouse antibody

## Specificity

Human

## Antibody description

EEF2/Elongation factor 2 (6E12) Mouse monoclonal antibody

## Preparation

Antigen: Purified recombinant fragment of human EEF2 expressed in E. Coli.

## Formulation

Ascitic fluid containing 0.03% sodium azide.

## Storage

Store at 4°C short term. Store at -20°C long term. Avoid freeze / thaw cycle.

## Clonality

Monoclonal

## Ig Type

Mouse IgG1

## Applications

WB, IHC-P, ICC/IF

## Dilutions

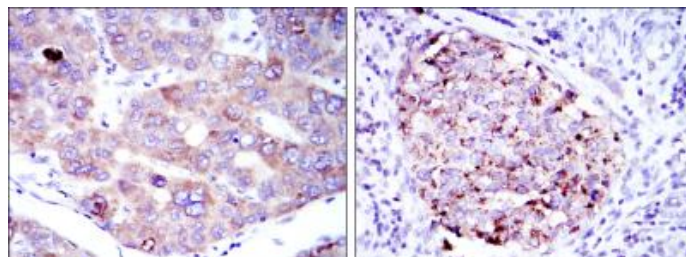
WB: 1/500 - 1/2000

IHC: 1/200 - 1/1000

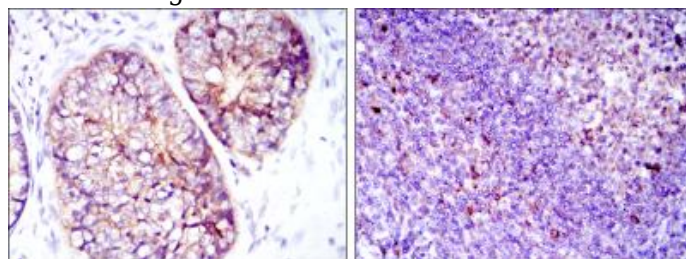
ICC: 1/200 - 1/1000

ELISA: 1/10000

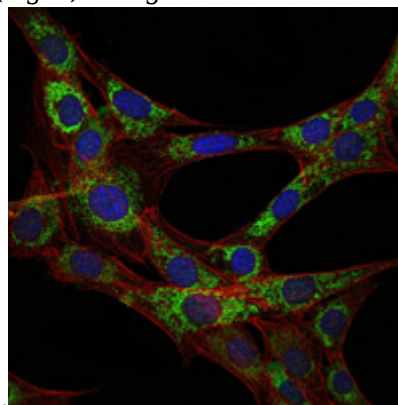
## Validations



Immunohistochemical analysis of paraffin-embedded liver cancer tissues (left) and kidney cancer tissues (right) using EEF2 mouse mAb with DAB staining.



Immunohistochemical analysis of paraffin-embedded prostate cancer tissues (left) and tonsil tissues (right) using EEF2 mouse mAb with DAB staining.



staining.

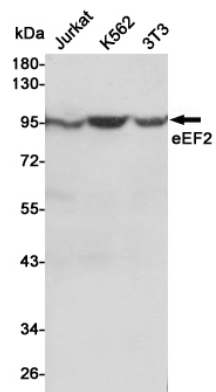
Immunofluorescence analysis of 3T3-L1 cells using EEF2 mouse mAb (green). Blue: DRAQ5 fluorescent DNA dye. Red: Actin filaments have been labeled with Alexa Fluor-555 phalloidin.

# Anti-EEF2/Elongation factor 2 (6E12) Mouse antibody



Catalog Number: 168364

---



Western blot detection of eEF2 in Jurkat, K562 and 3T3 cell lysates using eEF2 mouse mAb (1:1000 diluted). Predicted band size: 95KDa. Observed band size: 95KDa.