

# Anti-PKC mu/PKD Rabbit antibody



Catalog Number: 168664

## Product name

Anti-PKC mu/PKD Rabbit antibody

## Ig Type

Rabbit IgG

## Specificity

Human, Mouse, Rat

## Applications

WB

## Antibody description

PKC mu/PKD Rabbit monoclonal antibody

## Dilutions

1:1000-1:5000

## Preparation

Antigen: A synthetic peptide of human PKC mu

## Validations

## Formulation

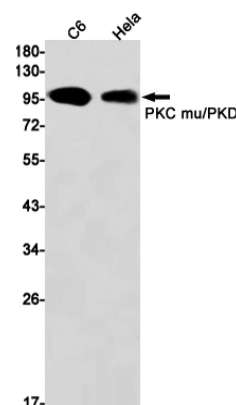
Supplied in 50nM Tris-Glycine(pH 7.4), 0.15M NaCl, 40%Glycerol, 0.01% sodium azide and 0.05% BSA.

## Storage

Store at 4°C short term. Aliquot and store at -20°C long term. Avoid freeze / thaw cycle.

## Clonality

Monoclonal



Western blot detection of PKC mu/PKD in C6,HeLa cell lysates using PKC mu/PKD Rabbit mAb(1:1000 diluted).Predicted band size:102kDa.Observed band size:102kDa.