

# RHOT2 antibody



Catalog Number: 114664

## Product name

RHOT2 antibody

## Specificity

Human, Mouse; other species not tested.

## Antibody description

RHOT2 Rabbit Polyclonal antibody. Positive IHC detected in human heart tissue, human colon tissue, human kidney tissue, human lung cancer tissue. Positive IP detected in L02 cells. Positive WB detected in human testis tissue, human heart tissue, human kidney tissue, L02 cells, mouse heart tissue. Observed molecular weight by Western-blot: 68 kDa

## Preparation

This antibody was obtained by immunization of RHOT2 recombinant protein (Accession Number: NM\_138769). Purification method: Antigen affinity purified.

## Formulation

PBS with 0.1% sodium azide and 50% glycerol pH 7.3.

## Storage

Store at -20°C. DO NOT ALIQUOT

## Clonality

Polyclonal

## Ig Type

Rabbit IgG

## Applications

ELISA, IHC, WB, IP

## Dilutions

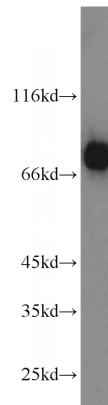
Recommended Dilution:

WB: 1:500-1:5000

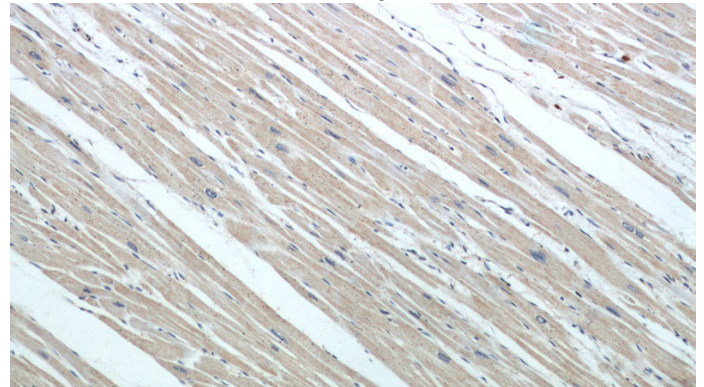
IP: 1:200-1:2000

IHC: 1:20-1:200

## Validations



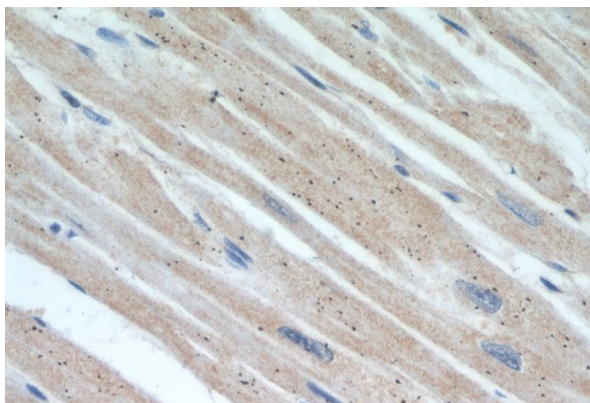
human testis tissue were subjected to SDS PAGE followed by western blot with Catalog No:114664(RHOT2 antibody) at dilution of 1:1000



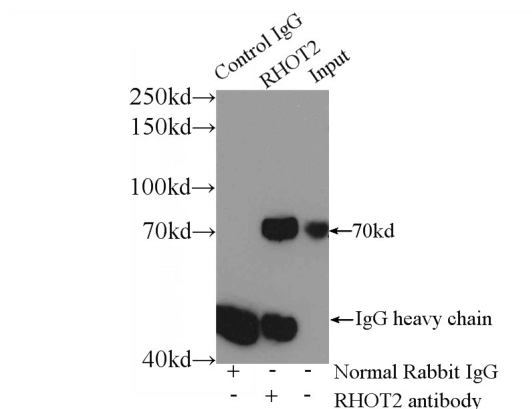
Immunohistochemical of paraffin-embedded human heart using Catalog No:114664(RHOT2 antibody) at dilution of 1:50 (under 10x lens)

# RHOT2 antibody

Catalog Number: 114664



Immunohistochemical of paraffin-embedded human heart using Catalog No:114664(RHOT2 antibody) at dilution of 1:50 (under 40x lens)



IP Result of anti-RHOT2 (IP:Catalog No:114664, 3ug; Detection:Catalog No:114664 1:500) with L02 cells lysate 1560ug.