

# CEP112 antibody



Catalog Number: 109264

## Product name

CEP112 antibody

## Specificity

Human, Mouse, Dog; other species not tested.

## Antibody description

CEP112 Rabbit Polyclonal antibody. Positive IF detected in MDCK cells. Positive WB detected in HEK-293 cells, mouse testis tissue. Observed molecular weight by Western-blot: 110-113 kDa

## Preparation

This antibody was obtained by immunization of CEP112 recombinant protein (Accession Number: XM\_017024302). Purification method: Antigen affinity purified.

## Formulation

PBS with 0.1% sodium azide and 50% glycerol pH 7.3.

## Storage

Store at -20°C. DO NOT ALIQUOT

## Clonality

Polyclonal

## Ig Type

Rabbit IgG

## Applications

ELISA, IF, WB

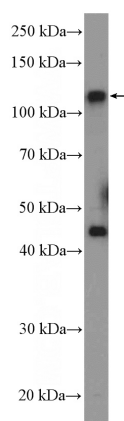
## Dilutions

Recommended Dilution:

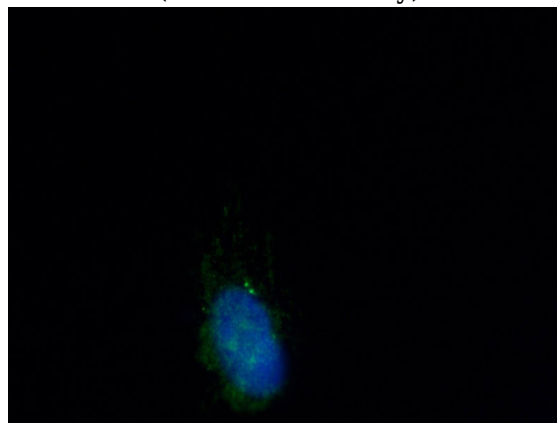
WB: 1:200-1:2000

IF: 1:20-1:200

## Validations



HEK-293 cells were subjected to SDS PAGE followed by western blot with Catalog No:109264(CCDC46 Antibody) at dilution of 1:600



Immunofluorescent analysis of MDCK cells using Catalog No:109264(CCDC46 Antibody) at dilution of 1:50 and Alexa Fluor 488-conjugated AffiniPure Goat Anti-Rabbit IgG(H+L)