

# SHARPIN antibody



Catalog Number: 115264

## Product name

SHARPIN antibody

IP: 1:500-1:5000

IHC: 1:20-1:200

## Specificity

Human, Mouse, Rat; other species not tested.

## Antibody description

SHARPIN Rabbit Polyclonal antibody. Positive WB detected in Raji cells, A549 cells, Jurkat cells. Positive IP detected in Raji cells. Positive IHC detected in human small intestine tissue. Observed molecular weight by Western-blot: 40kd

## Preparation

This antibody was obtained by immunization of SHARPIN recombinant protein (Accession Number: XM\_017013888). Purification method: Antigen affinity purified.

## Formulation

PBS with 0.02% sodium azide and 50% glycerol pH 7.3.

## Storage

Store at -20°C. DO NOT ALIQUOT

## Clonality

Polyclonal

## Ig Type

Rabbit IgG

## Applications

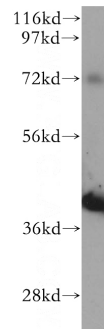
ELISA, WB, IP, IHC

## Dilutions

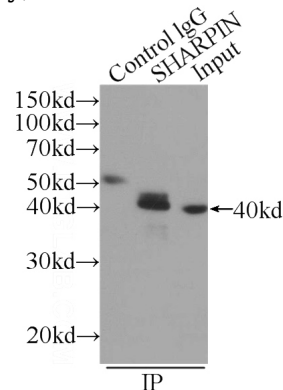
Recommended Dilution:

WB: 1:500-1:5000

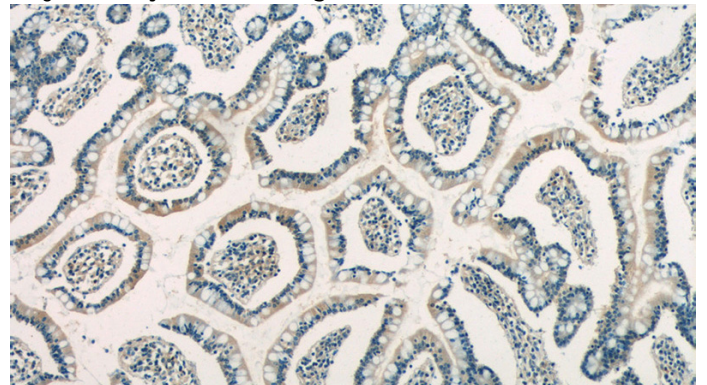
## Validations



Raji cells were subjected to SDS PAGE followed by western blot with Catalog No:115264(SHARPIN antibody) at dilution of 1:500



IP Result of anti-SHARPIN (IP:Catalog No:115264, 3ug; Detection:Catalog No:115264 1:1500) with Raji cells lysate 2520ug.



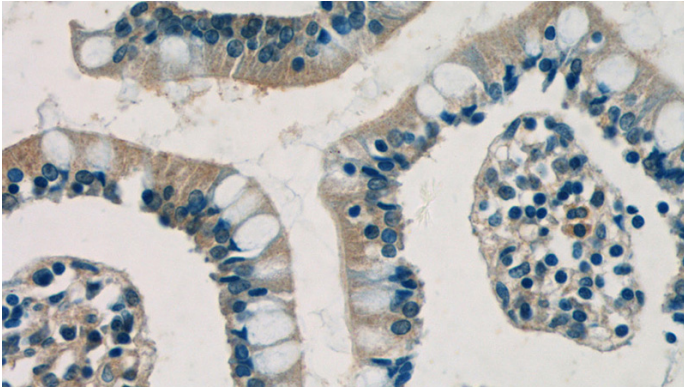
Immunohistochemistry of paraffin-embedded human small intestine tissue slide using Catalog

# SHARPIN antibody

Catalog Number: 115264

---

No:115264(SHARPIN Antibody) at dilution of 1:50  
(under 10x lens)



Immunohistochemistry of paraffin-embedded  
human small intestine tissue slide using Catalog  
No:115264(SHARPIN Antibody) at dilution of 1:50  
(under 40x lens)