

RAB22A-specific antibody



Catalog Number: 106964

Product name

RAB22A-specific antibody

Specificity

human, mouse; other species not tested.

Antibody description

RAB22A-specific Rabbit Polyclonal antibody. Positive WB detected in human kidney tissue, HEK-293 cells. Observed molecular weight by Western-blot: 22kd

Preparation

This antibody was obtained by immunization of Peptide (Accession Number: NM_020673). Purification method: Antigen affinity purified.

Formulation

PBS with 0.02% sodium azide and 50% glycerol pH 7.3.

Storage

Store at -20°C. DO NOT ALIQUOT

Clonality

Polyclonal

Ig Type

Rabbit IgG

Applications

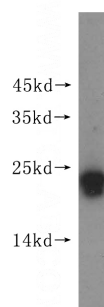
ELISA, WB

Dilutions

Recommended Dilution:

WB: 1:200-1:2000

Validations



human kidney tissue were subjected to SDS PAGE followed by western blot with Catalog No:114421(RAB22A-specific antibody) at dilution of 1:300