

GPX2 Polyclonal Antibody

Catalog Number: 162964

Product name

GPX2 Polyclonal Antibody

Specificity

Human, Mouse, Rat

Antibody description

Polyclonal antibody to GPX2

Preparation

Antigen: Recombinant fusion protein containing a sequence corresponding to amino acids 100-180 of human GPX2 (NP_002074.2).

Formulation

PBS with 0.02% sodium azide, 50% glycerol, pH7.3.

Storage

Store at -20°C. Avoid freeze / thaw cycles.

Clonality

Polyclonal

Ig Type

Rabbit IgG

Applications

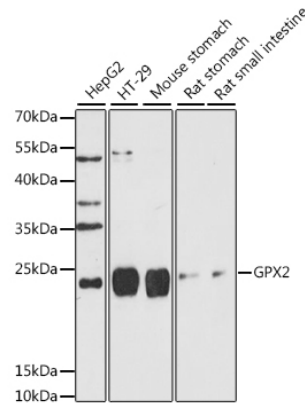
WB, IHC

Dilutions

WB 1:500 - 1:2000

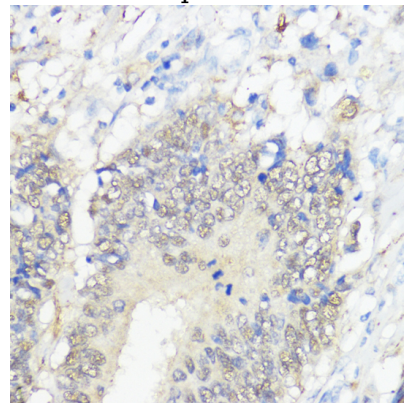
IHC 1:50 - 1:200

Validations



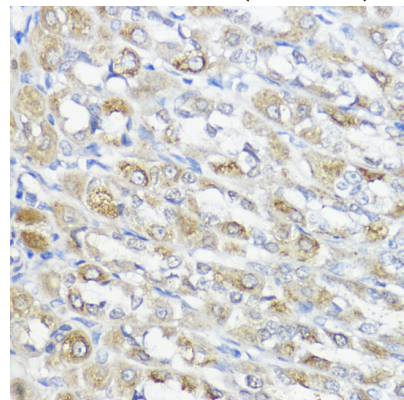
Western blot - GPX2 Polyclonal Antibody

Western blot analysis of extracts of various cell lines, using GPX2 antibody at 1:1000 dilution. Secondary antibody: HRP Goat Anti-Rabbit IgG (H+L) at 1:10000 dilution. Lysates/proteins: 25ug per lane. Blocking buffer: 3% nonfat dry milk in TBST. Detection: ECL Basic Kit. Exposure time: 90s.



Immunohistochemistry - GPX2 Polyclonal Antibody

Immunohistochemistry of paraffin-embedded human colon carcinoma using GPX2 antibody at dilution of 1:100 (40x lens).

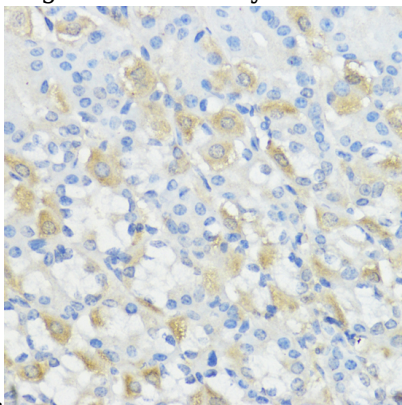


GPX2 Polyclonal Antibody

Catalog Number: 162964

Immunohistochemistry - GPX2 Polyclonal Antibody

Immunohistochemistry of paraffin-embedded rat stomach using GPX2 antibody at dilution of 1:100



(40x lens).

Immunohistochemistry - GPX2 Polyclonal Antibody

Immunohistochemistry of paraffin-embedded mouse stomach using GPX2 antibody at dilution of 1:100 (40x lens).