

Anti-CGREF1 antibody



Catalog Number: 142964

Product name

Anti-CGREF1 antibody

Immunogen

[Human CGREF1 \(His Tag\) recombinant protein](#)

Specificity

Human CGREF1

Antibody description

Rabbit Polyclonal to Human CGREF1

Preparation

Produced in rabbits immunized with purified, recombinant Human CGREF1. CGREF1 specific IgG was purified by Human CGREF1 affinity chromatography.

Formulation

0.2 µm filtered solution in PBS

Storage

This antibody can be stored at 2°C-8°C for one month without detectable loss of activity. Antibody products are stable for twelve months from date of receipt when stored at -20°C to -80°C.

Preservative-Free.

Sodium azide is recommended to avoid contamination (final concentration 0.05%-0.1%). It is toxic to cells and should be disposed of properly. Avoid repeated freeze-thaw cycles.

Clonality

Polyclonal

Ig Type

Rabbit IgG

Applications

WB, ELISA

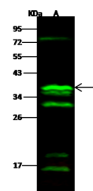
Dilutions

WB: 5-20 µg/ml

ELISA: 0.1-0.2 µg/ml

This antibody can be used at 0.1-0.2 µg/ml with the appropriate secondary reagents to detect Human CGREF1.

Validations



Lanes	A
Sample (whole cell lysate)	HL60
Sample Volume (µg/lane)	30
Gel	13% SDS-PAGE reducing gel
Recommended Concentration	5-20 µg/ml
Secondary Antibody	Dylight 800 labeled Antibody to Rabbit IgG (1:1), at 1:5000 dilution.
Explanation	Developed using Odyssey imaging system. Predicted band size : 32 kDa Observed band size : 32 kDa Additional bands at : 16 kDa, 19 kDa, 31 kDa and 76 kDa (We are unsure as to the identity of these extra bands.)

CGREF1 Antibody, Rabbit PAb, Antigen Affinity Purified, Western blot