

PALMD antibody

Catalog Number: 113564

Product name

PALMD antibody

IP: 1:200-1:2000

IHC: 1:20-1:200

Specificity

Human, Mouse, Rat; other species not tested.

Antibody description

PALMD Rabbit Polyclonal antibody. Positive IHC detected in human liver tissue. Positive IP detected in mouse heart tissue,. Positive WB detected in HeLa cells, mouse lung tissue. Observed molecular weight by Western-blot: 80 kDa

Preparation

This antibody was obtained by immunization of PALMD recombinant protein (Accession Number: NM_017734). Purification method: Antigen affinity purified.

Formulation

PBS with 0.02% sodium azide and 50% glycerol pH 7.3.

Storage

Store at -20°C. DO NOT ALIQUOT

Clonality

Polyclonal

Ig Type

Rabbit IgG

Applications

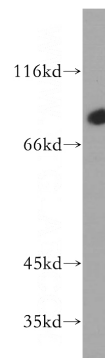
ELISA, WB, IHC, IP

Dilutions

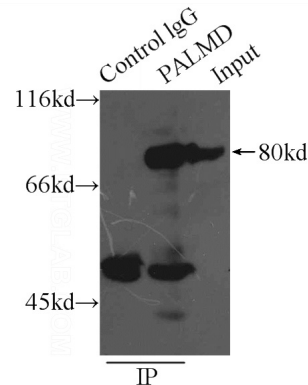
Recommended Dilution:

WB: 1:200-1:2000

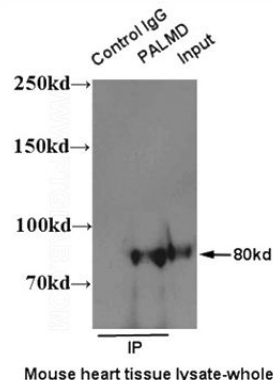
Validations



HeLa cells were subjected to SDS PAGE followed by western blot with Catalog No:113564(PALMD antibody) at dilution of 1:300



IP Result of anti-PALMD (IP:Catalog No:113564, 5ug; Detection:Catalog No:113564 1:500) with mouse heart tissue lysate 6000ug.

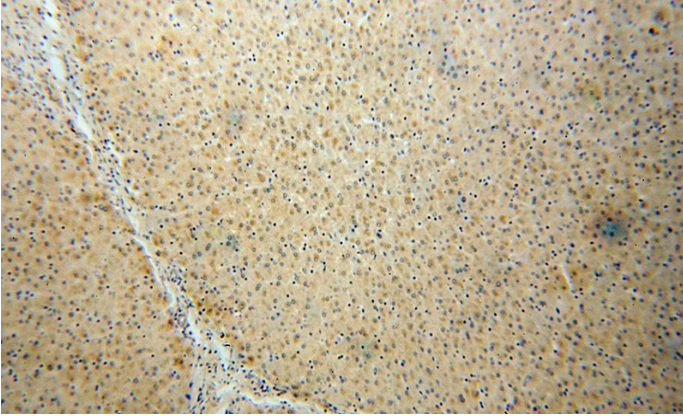


IP result of PALMD antibody (Catalog No:113564 for Ip and Detection) with mouse heart tissue

PALMD antibody

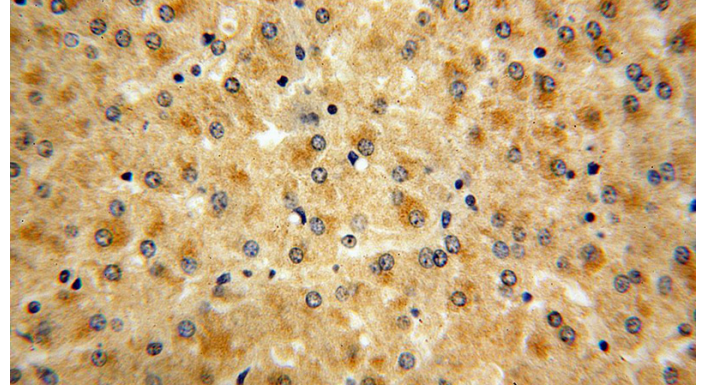
Catalog Number: 113564

lysate.



Immunohistochemical of paraffin-embedded human liver using Catalog No:113564(PALMD

antibody) at dilution of 1:100 (under 10x lens)



Immunohistochemical of paraffin-embedded human liver using Catalog No:113564(PALMD antibody) at dilution of 1:100 (under 40x lens)