

# DAPP1 antibody

Catalog Number: 109864

## Product name

DAPP1 antibody

## Specificity

human, mouse, rat; other species not tested.

## Antibody description

DAPP1 Rabbit Polyclonal antibody. Positive IF detected in Hela. Positive IHC detected in human liver cancer.

## Preparation

This antibody was obtained by immunization of DAPP1 recombinant protein (Accession Number: NM\_014395). Purification method: Antigen affinity purified.

## Formulation

PBS with 0.02% sodium azide and 50% glycerol pH 7.3.

## Storage

Store at -20°C. DO NOT ALIQUOT

## Clonality

Polyclonal

## Ig Type

Rabbit IgG

## Applications

ELISA, IHC, IF

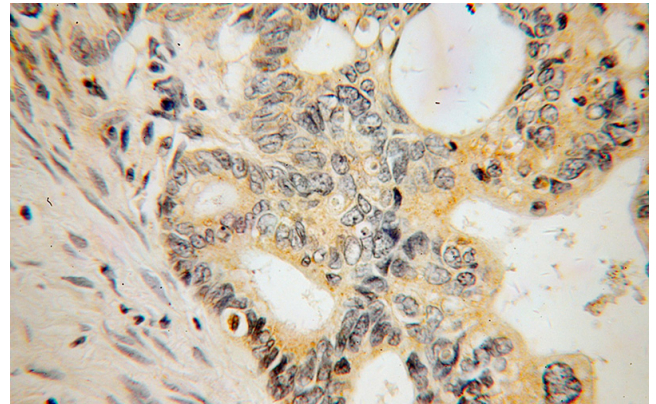
## Dilutions

Recommended Dilution:

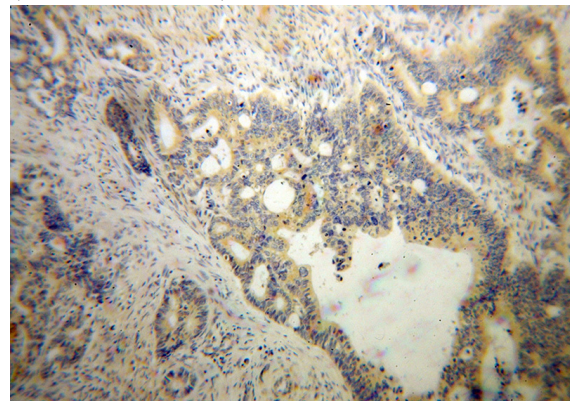
IHC: 1:20-1:200

IF: 1:20-1:200

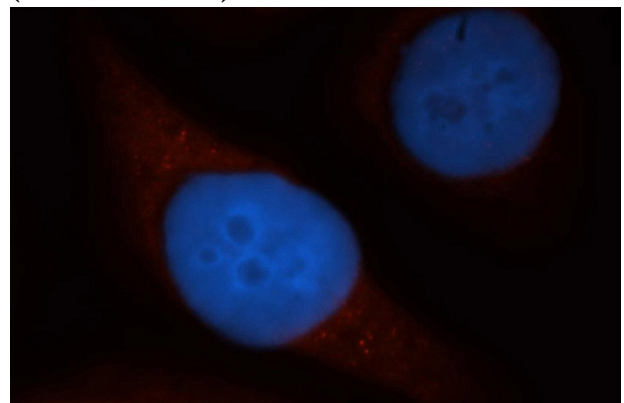
## Validations



Immunohistochemical of paraffin-embedded human liver cancer using Catalog No:109864(DAPP1 antibody) at dilution of 1:100 (under 40x lens)



Immunohistochemical of paraffin-embedded human liver cancer using Catalog No:109864(DAPP1 antibody) at dilution of 1:100 (under 10x lens)



Immunofluorescent analysis of Hela cells, using DAPP1 antibody Catalog No:109864 at 1:50 dilution and Rhodamine-labeled goat anti-rabbit

# DAPP1 antibody



Catalog Number: 109864

---

IgG (red). Blue pseudocolor = DAPI (fluorescent DNA dye).