

# Anti-Phospho-Glutamate Receptor 1 (AMPA subtype) (Ser845) Rabbit antibody



Catalog Number: 168864

## Product name

Monoclonal

Anti-Phospho-Glutamate Receptor 1 (AMPA subtype) (Ser845) Rabbit antibody

## Ig Type

Rabbit IgG

## Specificity

Human, Mouse, Rat

## Applications

WB

## Antibody description

Phospho-Glutamate Receptor 1 (AMPA subtype) (Ser845) Rabbit monoclonal antibody

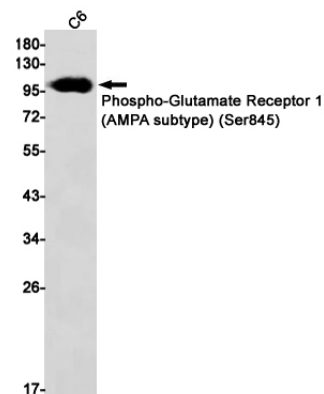
## Dilutions

1:1000

## Preparation

Antigen: A synthetic phosphopeptide corresponding to residues surrounding Ser845 of human AMPA Receptor 1 (GluA1)

## Validations



## Formulation

Supplied in 50nM Tris-Glycine(pH 7.4), 0.15M NaCl, 40%Glycerol, 0.01% sodium azide and 0.05% BSA.

## Storage

Store at 4°C short term. Aliquot and store at -20°C long term. Avoid freeze / thaw cycle.

Western blot detection of Phospho-Glutamate Receptor 1 (AMPA subtype) (Ser845) in C6 cell lysates using Phospho-Glutamate Receptor 1 (AMPA subtype) (Ser845) Rabbit mAb(1:1000 diluted). Predicted band size:102kDa. Observed band size:102kDa.

## Clonality