

Integrin beta-4 antibody



Catalog Number: 111864

Product name

Integrin beta-4 antibody

WB: 1:500-1:5000

IP: 1:200-1:2000

Specificity

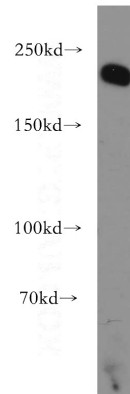
Human, Mouse, Rat; other species not tested.

IHC: 1:20-1:200

Antibody description

Integrin beta-4 Rabbit Polyclonal antibody. Positive FC detected in HeLa cells. Positive IHC detected in human pancreas cancer tissue, human breast cancer tissue. Positive WB detected in MCF7 cells, A431 cells, A549 cells. Positive IP detected in HeLa cells. Observed molecular weight by Western-blot: 194-202 kDa

Validations



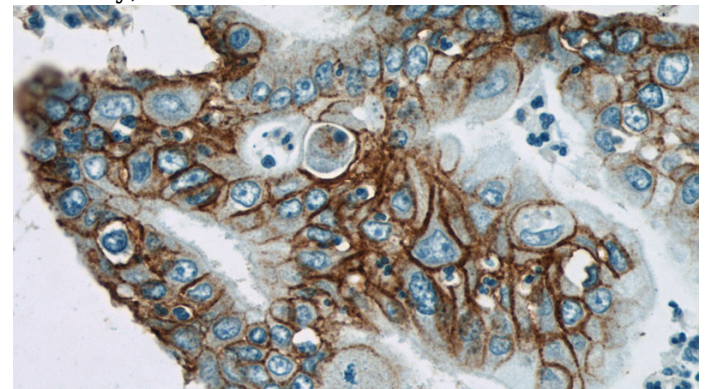
Preparation

This antibody was obtained by immunization of Integrin beta-4 recombinant protein (Accession Number: NM_001005731). Purification method: Antigen affinity purified.

MCF7 cells were subjected to SDS PAGE followed by western blot with Catalog No:111864(ITGB4 antibody) at dilution of 1:500

Formulation

PBS with 0.02% sodium azide and 50% glycerol pH 7.3.



Storage

Store at -20°C. DO NOT ALIQUOT

Clonality

Polyclonal

Immunohistochemical of paraffin-embedded human pancreas cancer using Catalog No:111864(ITGB4 antibody) at dilution of 1:100 (under 40x lens)

Ig Type

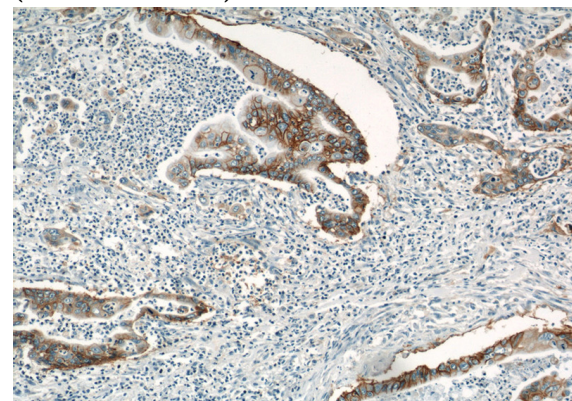
Rabbit IgG

Applications

ELISA, WB, IHC, FC, IP

Dilutions

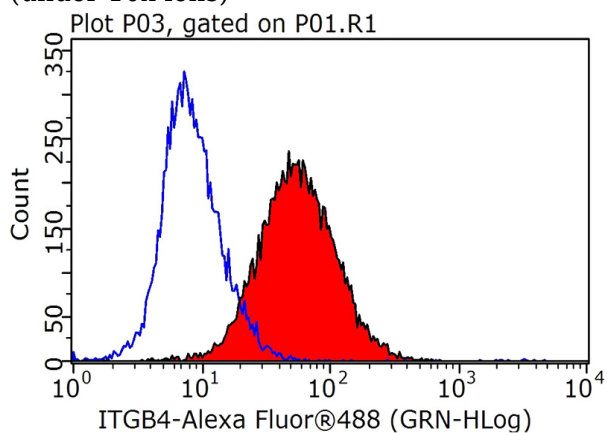
Recommended Dilution:



Integrin beta-4 antibody

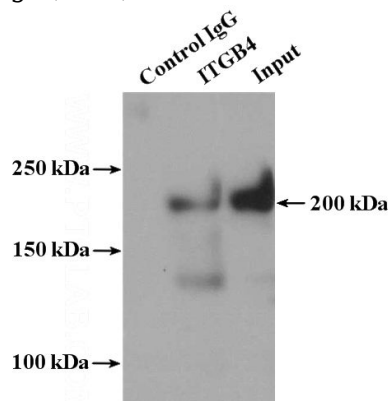
Catalog Number: 111864

Immunohistochemical of paraffin-embedded human pancreas cancer using Catalog No:111864(ITGB4 antibody) at dilution of 1:100 (under 10x lens)



1X10⁶ HeLa cells were stained with 0.2ug Integrin beta-4 antibody (Catalog No:111864, red)

and control antibody (blue). Fixed with 90% MeOH blocked with 3% BSA (30 min). Alexa Fluor 488-conjugated AffiniPure Goat Anti-Rabbit IgG(H+L) with dilution 1:1000.



IP Result of anti-Integrin beta-4 (IP:Catalog No:111864, 4ug; Detection:Catalog No:111864 1:500) with HeLa cells lysate 2400ug.