

Anti-APG5L/ATG5 Rabbit pA



Catalog Number: 167464

Product name

Anti-APG5L/ATG5 Rabbit pA

Specificity

Human, Mouse, Rat

Antibody description

APG5L/ATG5 Rabbit pA

Preparation

Antigen: A synthesized peptide derived from human ATG5

Formulation

Rabbit IgG in phosphate buffered saline , pH 7.4, 150mM NaCl, 0.02% sodium azide and 50% glycerol.

Storage

Store at 4°C short term. Store at -20°C long term. Avoid freeze / thaw cycle.

Clonality

Polyclonal

Ig Type

Rabbit IgG

Applications

WB, IHC-P, ICC/IF, IP

Dilutions

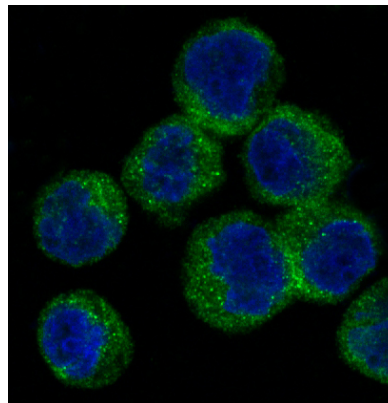
WB: 1/1000-1/2000

IHC: 1/50-1/200

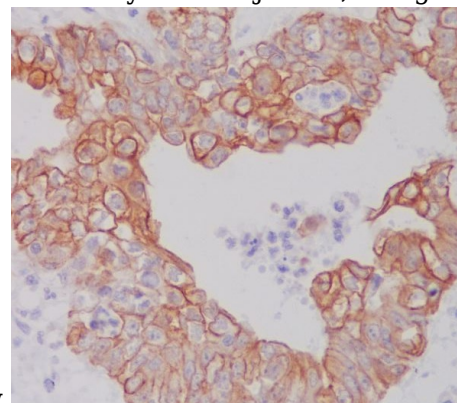
ICC/IF: 1/50-1/200

IP: 1/50

Validations

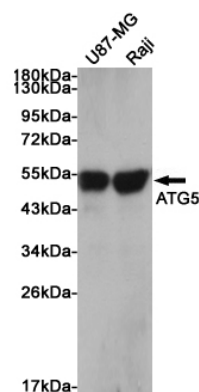


Immunofluorescent analysis of Raji cells, using



ATG5 Antibody.

Immunohistochemical analysis of paraffin-embedded human ovarian cancer, using ATG5



Antibody.

Western blot analysis of extracts from U87MG and Raji cells using ATG5 Rabbit pAb at 1:1000 dilution. Predicted band size: 55kDa. Observed band size: 55kDa.