

ITGA2 Polyclonal Antibody

Catalog Number: 165464

Product name

ITGA2 Polyclonal Antibody

Specificity

Human, Mouse, Rat

Antibody description

Polyclonal antibody to ITGA2

Preparation

Antigen: Recombinant protein of human ITGA2

Formulation

PBS with 0.02% sodium azide, 50% glycerol, pH7.3.

Storage

Store at -20°C. Avoid freeze / thaw cycles.

Clonality

Polyclonal

Ig Type

Rabbit IgG

Applications

WB, IHC, IF

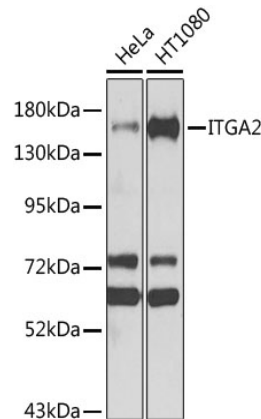
Dilutions

WB 1:500 - 1:2000

IHC 1:100 - 1:200

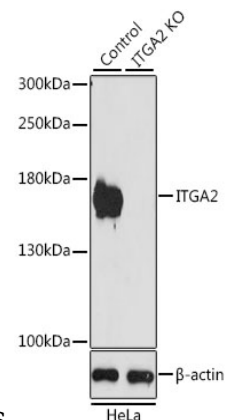
IF 1:50 - 1:200

Validations



Western blot - ITGA2 Polyclonal Antibody

Western blot analysis of extracts of various cell lines, using ITGA2 antibody at 1:1000 dilution. Secondary antibody: HRP Goat Anti-Rabbit IgG (H+L) at 1:10000 dilution. Lysates/proteins: 25ug per lane. Blocking buffer: 3% nonfat dry milk in TBST. Detection: ECL



Basic Kit .Exposure time: 15s.

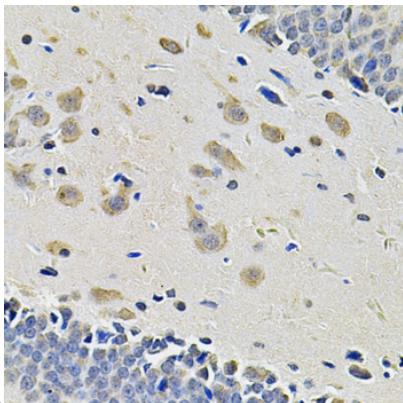
Western blot - ITGA2 Polyclonal Antibody

Western blot analysis of extracts from normal (control) and ITGA2 knockout HeLa cells, using ITGA2 antibody at 1:1000 dilution. Secondary antibody: HRP Goat Anti-Rabbit IgG (H+L) at 1:10000 dilution. Lysates/proteins: 25ug per lane. Blocking buffer: 3% nonfat dry milk in TBST. Detection: ECL Basic Kit .Exposure time:

ITGA2 Polyclonal Antibody



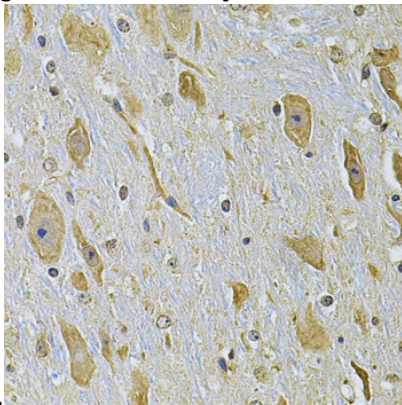
Catalog Number: 165464



90s.

Immunohistochemistry - ITGA2 Polyclonal Antibody

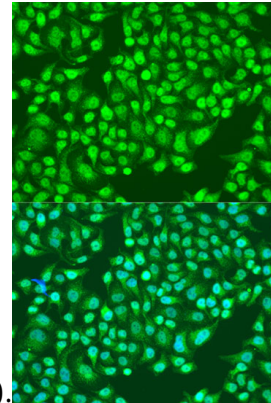
Immunohistochemistry of paraffin-embedded rat brain using ITGA2 Antibody at dilution of 1:100



(40x lens).

Immunohistochemistry - ITGA2 Polyclonal Antibody

Immunohistochemistry of paraffin-embedded mouse brain using ITGA2 Antibody at dilution of



1:100 (40x lens).

Immunofluorescence - ITGA2 Polyclonal Antibody

Immunofluorescence analysis of U2OS cells using ITGA2 antibody at dilution of 1:100. Blue: DAPI for nuclear staining.