

OBFC2B antibody



Catalog Number: 113464

Product name

OBFC2B antibody

Immunogen

[Human OBFC2B Recombinant protein \(GST tag\)](#)

Specificity

Human, Mouse, Rat; other species not tested.

Antibody description

OBFC2B Rabbit Polyclonal antibody. Positive IP detected in HeLa cells. Positive WB detected in human kidney tissue, HeLa cells, NIH/3T3 cells. Positive IHC detected in human ovary tumor tissue, human pancreas tissue. Positive IF detected in HeLa cells. Observed molecular weight by Western-blot: 30-33 kDa

Preparation

This antibody was obtained by immunization of OBFC2B recombinant protein (Accession Number: XM_005269148). Purification method: Antigen affinity purified.

Formulation

PBS with 0.02% sodium azide and 50% glycerol pH 7.3.

Storage

Store at -20°C. DO NOT ALIQUOT

Clonality

Polyclonal

Ig Type

Rabbit IgG

Applications

ELISA, WB, IF, IHC, IP

Dilutions

Recommended Dilution:

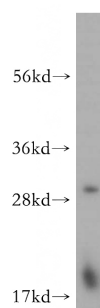
WB: 1:200-1:2000

IP: 1:200-1:2000

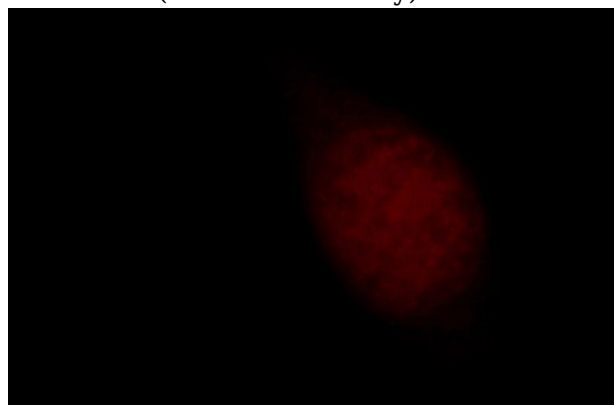
IHC: 1:20-1:200

IF: 1:10-1:100

Validations



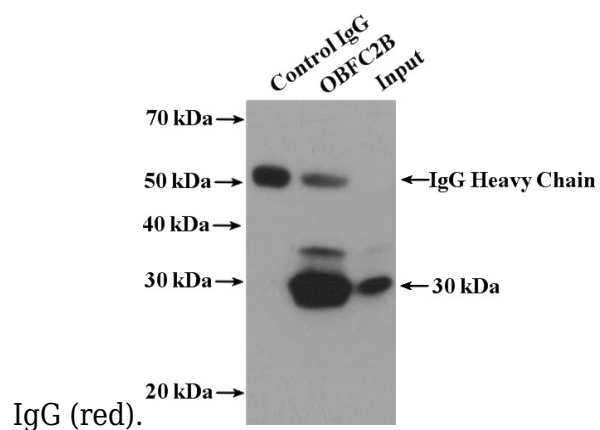
human kidney tissue were subjected to SDS PAGE followed by western blot with Catalog No:113464(OBFC2B antibody) at dilution of 1:200



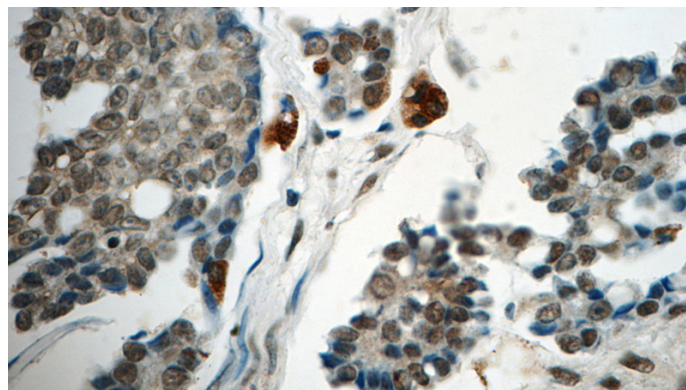
Immunofluorescent analysis of HeLa cells, using OBFC2B antibody Catalog No:113464 at 1:25 dilution and Rhodamine-labeled goat anti-rabbit

OBFC2B antibody

Catalog Number: 113464



IP Result of anti-OBFC2B (IP:Catalog No:113464, 4ug; Detection:Catalog No:113464 1:500) with HeLa cells lysate 3200ug.



Immunohistochemistry of paraffin-embedded human ovary tumor tissue slide using Catalog No:113464(OBFC2B Antibody) at dilution of 1:50 (under 40x lens)