

# TIPE2 antibody



Catalog Number: 116064

## Product name

TIPE2 antibody

## Immunogen

[Human TNFAIP8L2 Recombinant protein \(GST tag\)](#)

## Specificity

Human, Mouse, Rat; other species not tested.

## Antibody description

TIPE2 Rabbit Polyclonal antibody. Positive IP detected in mouse cerebellum tissue. Positive WB detected in mouse cerebellum tissue, mouse small intestine tissue, mouse spleen tissue, rat lymph tissue, rat spleen tissue. Positive IHC detected in human lymphoma tissue. Positive IF detected in HepG2 cells. Observed molecular weight by Western-blot: 18 kDa

## Preparation

This antibody was obtained by immunization of TIPE2 recombinant protein (Accession Number: NM\_024575). Purification method: Antigen affinity purified.

## Formulation

PBS with 0.02% sodium azide and 50% glycerol pH 7.3.

## Storage

Store at -20°C. DO NOT ALIQUOT

## Clonality

Polyclonal

## Ig Type

Rabbit IgG

## Applications

ELISA, WB, IHC, IP, IF

## Dilutions

Recommended Dilution:

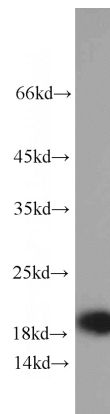
WB: 1:200-1:2000

IP: 1:200-1:2000

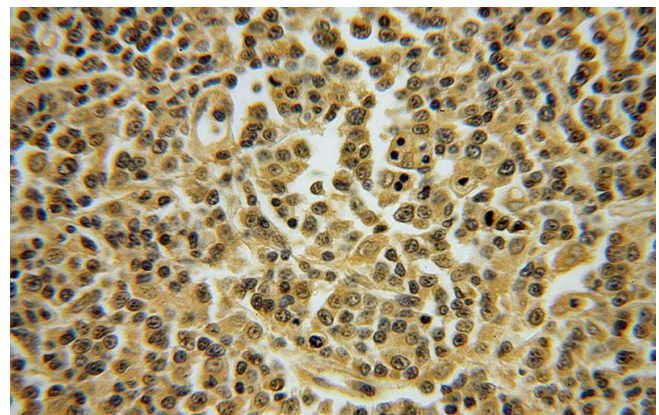
IHC: 1:20-1:200

IF: 1:10-1:100

## Validations



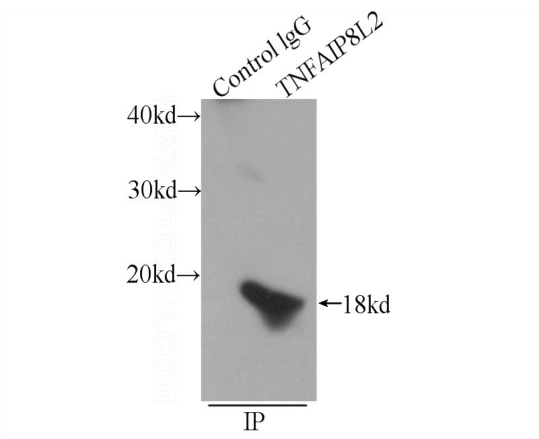
mouse cerebellum tissue were subjected to SDS PAGE followed by western blot with Catalog No:116064(TNFAIP8L2 antibody) at dilution of 1:500



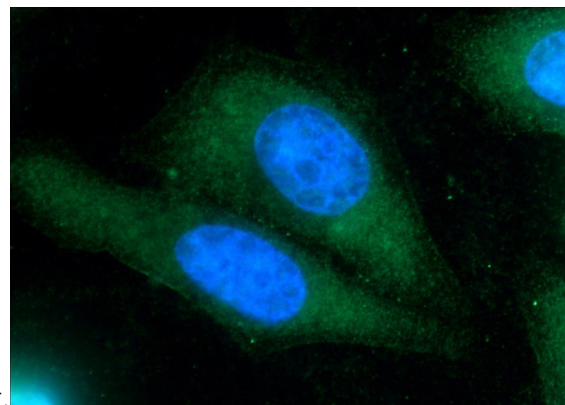
Immunohistochemical of paraffin-embedded human lymphoma using Catalog No:116064(TNFAIP8L2 antibody) at dilution of 1:50 (under 40x lens)

# TIPE2 antibody

Catalog Number: 116064



IP Result of anti-TNFAIP8L2 (IP:Catalog No:116064, 3ug; Detection:Catalog No:116064 1:500) with mouse cerebellum tissue lysate



4000ug.

Immunofluorescent analysis of HepG2 cells using Catalog No:116064(TNFAIP8L2 Antibody) at dilution of 1:25 and Alexa Fluor 488-conjugated AffiniPure Goat Anti-Rabbit IgG(H+L)