

# Anti-Human Serum Albumin / HSA / HAS / ALB antibody



Catalog Number: 104064

## Product name

Anti-Human Serum Albumin / HSA / HAS / ALB antibody

## Specificity

Human Serum Albumin / HSA  
**No cross-reactivity** in ELISA with Bovine serum albumin / BSA

## Antibody description

Rabbit monoclonal to Human Serum Albumin / HSA / HAS / ALB

## Preparation

This antibody was obtained from a rabbit immunized with purified Human Serum Albumin.

## Formulation

0.2 µm filtered solution in PBS with 5% trehalose

## Storage

This antibody can be stored at 2°C-8°C for one month without detectable loss of activity. Antibody products are stable for twelve months from date of receipt when stored at -20°C to -80°C.

Preservative-Free.

Sodium azide is recommended to avoid contamination (final concentration 0.05%-0.1%). It is toxic to cells and should be disposed of properly. Avoid repeated freeze-thaw cycles.

## Clonality

Monoclonal

## Ig Type

Rabbit IgG

## Applications

ELISA, FCM, IF, IP, ICC/IF

## Dilutions

ELISA: 0.1-0.2 µg/mL

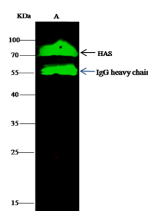
This antibody can be used at 0.1-0.2 µg/mL with the appropriate secondary reagents to detect HSA. The detection limit for HSA is approximately 0.0049 ng/well.

FCM: 0.5-2 µg/Test

ICC/IF: 10-25 µg/mL

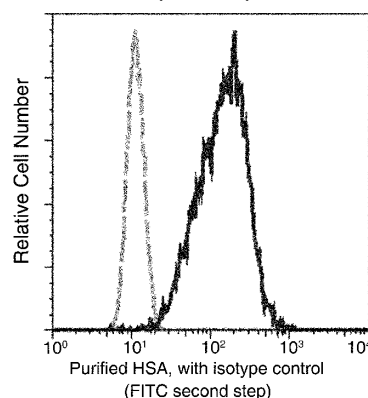
IP: 0.5-2 µg/mg of lysate

## Validations



Items	Lanes
Sample (whole cell lysate)	HepG2
Sample quantity	0.5 mg
IP antibody quantity	2 µg
Immunomagnetic beads Protein G	60 mg
Gel	13% SDS-PAGE reducing gel
Primary antibody	HAS antibody at 10 µg/ml
Secondary antibody	Dylight 800-labeled antibody to rabbit IgG (1:1), at 1:5000 dilution

Human Serum Albumin / HSA / ALB Antibody,



Rabbit MAb

Human Serum Albumin / HSA / ALB Antibody,  
Rabbit MAb

Flow cytometric analysis of Human HSA expression on HepG2 cells. The cells were treated according to manufacturer's manual (BD Pharmingen™ Cat. No. 554714), stained with

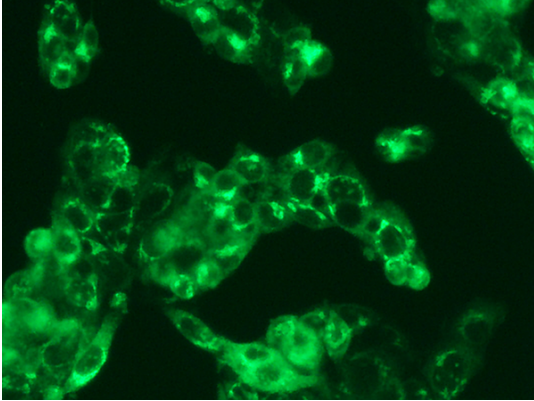
# Anti-Human Serum Albumin / HSA / HAS / ALB antibody



Catalog Number: 104064

---

purified anti-Human HSA, then a FITC-conjugated second step antibody. The fluorescence histograms were derived from gated events with the forward and side light-scatter characteristics of intact cells.



Human Serum Albumin / HSA / ALB Antibody, Rabbit MAb, Immunofluorescence

Immunofluorescence staining of Human HSA in HepG2 cells. Cells were fixed with 4% PFA, permeabilized with 0.3% Triton X-100 in PBS, blocked with 10% serum, and incubated with rabbit anti-Human HSA monoclonal antibody (15  $\mu\text{g/ml}$ ) at 37°C 1 hour. Then cells were stained with the Alexa Fluor® 488-conjugated Goat Anti-rabbit IgG secondary antibody (green). Positive staining was localized to cytoplasm.