

MPPED1 antibody



Catalog Number: 112754

Product name

MPPED1 antibody

IHC: 1:20-1:200

IF: 1:10-1:100

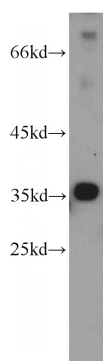
Specificity

Human, Mouse, Rat; other species not tested.

Validations

Antibody description

MPPED1 Rabbit Polyclonal antibody. Positive WB detected in mouse brain tissue, rat brain tissue. Positive IHC detected in human pancreas tissue, human brain tissue, human heart tissue. Positive IF detected in Hela cells. Observed molecular weight by Western-blot: 37 kDa



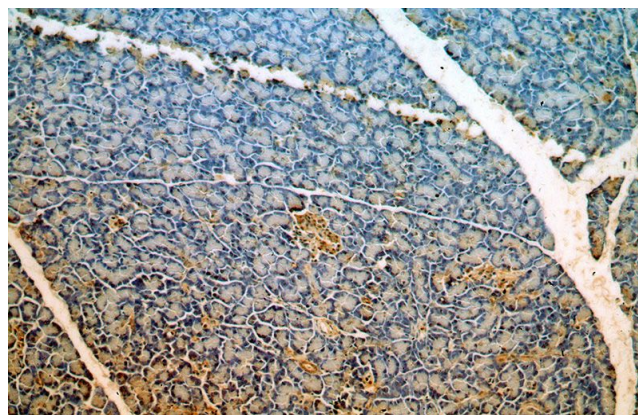
Preparation

This antibody was obtained by immunization of MPPED1 recombinant protein (Accession Number: NM_001362786). Purification method: Antigen affinity purified.

mouse brain tissue were subjected to SDS PAGE followed by western blot with Catalog No:112754(MPPED1 antibody) at dilution of 1:1500

Formulation

PBS with 0.02% sodium azide and 50% glycerol pH 7.3.



Storage

Store at -20°C. DO NOT ALIQUOT

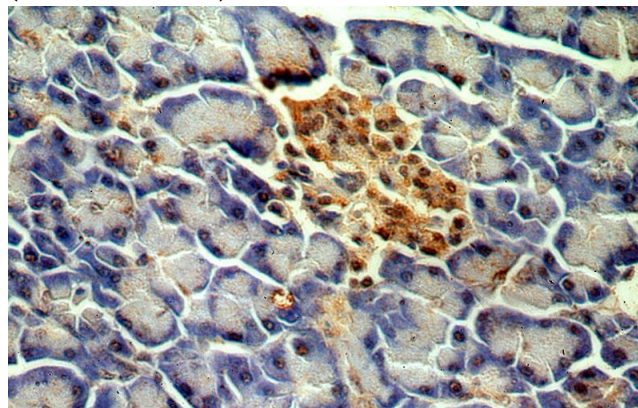
Clonality

Polyclonal

Immunohistochemical of paraffin-embedded human pancreas using Catalog No:112754(MPPED1 antibody) at dilution of 1:50 (under 10x lens)

Ig Type

Rabbit IgG



Applications

ELISA, WB, IHC, IF

Dilutions

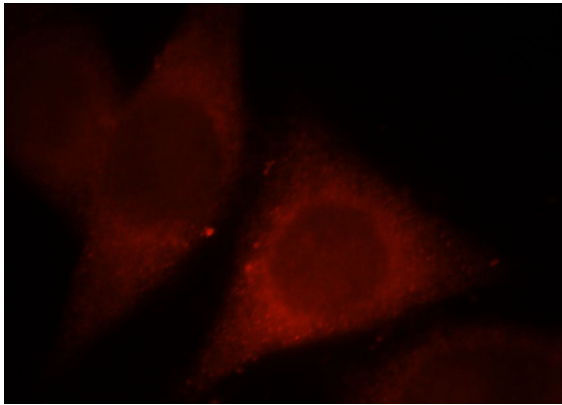
Recommended Dilution:

WB: 1:500-1:5000

MPPED1 antibody

Catalog Number: 112754

Immunohistochemical of paraffin-embedded human pancreas using Catalog No:112754(MPPED1 antibody) at dilution of 1:50 (under 40x lens)



Immunofluorescent analysis of Hela cells, using MPPED1 antibody Catalog No:112754 at 1:25 dilution and Rhodamine-labeled goat anti-rabbit IgG (red).