

Anti-BATF3 antibody



Catalog Number: 142754

Product name

Anti-BATF3 antibody

Specificity

Human BATF3

Antibody description

Rabbit Polyclonal to Human BATF3

Preparation

Produced in rabbits immunized with a synthetic peptide corresponding to the N-terminus of the Human BATF3, and purified by antigen affinity chromatography.

Formulation

0.2 µm filtered solution in PBS

Storage

This antibody can be stored at 2°C-8°C for one month without detectable loss of activity. Antibody products are stable for twelve months from date of receipt when stored at -20°C to -80°C.

Preservative-Free.

Sodium azide is recommended to avoid contamination (final concentration 0.05%-0.1%). It

is toxic to cells and should be disposed of properly. Avoid repeated freeze-thaw cycles.

Clonality

Polyclonal

Ig Type

Rabbit IgG

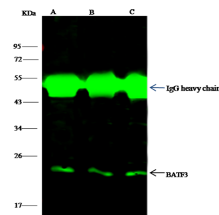
Applications

IP

Dilutions

IP: 4-8 µl/mg of lysate

Validations



Item	Lane	A	B	C
Sample (whole cell lysate)		HepG2	K562	A549
Sample quantity		0.5 mg		
IP antibody quantity		4 µl		
Protein G agarose		15 µl of 50% Protein G Agarose		
Gel		13% SDS-PAGE reducing gel		
Primary antibody		KLJ1-SMCC-SIN0A2820+KLJ1-SMCC-SIN0A2863 antibody at 10 µg/ml		
Secondary antibody		DyLight 800-labeled antibody to rabbit IgG (H+L), at 1:5000 dilution		

Human BATF3 Immunoprecipitation(IP) 14682